

APP CRS
269°

Rwy Idg
TDZE
Apt Elev

3900
691
691

RNAV (GPS) RWY 27

LITCHFIELD MUNI (3LF)

RNP APCH - GPS.

▼

⚠

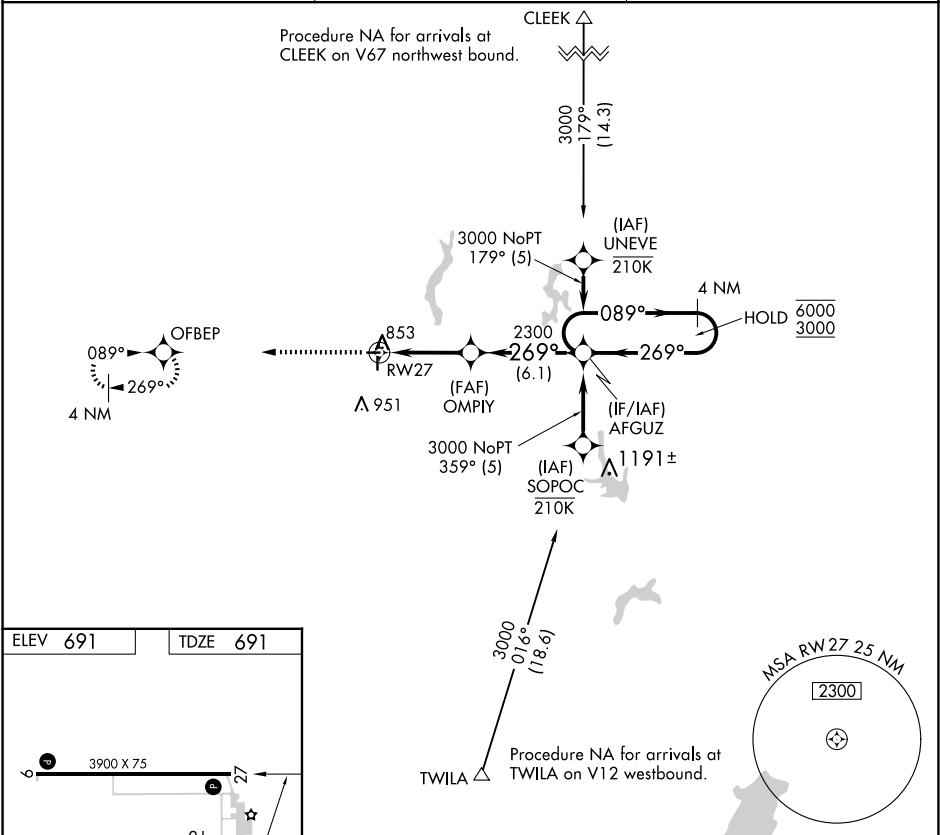
Rwy 27 helicopter visibility reduction below 3/4 SM NA. When local altimeter setting not received, use Taylorville altimeter setting and increase all MDA 80 feet and LNAV Cat C visibility 1/8 SM. VDP NA when using Taylorville altimeter setting.

MISSED APPROACH: Climb to 3000 direct OFBEP and hold.

AWOS-3PT
118.175

ST. LOUIS APP CON
124.2 353.9

UNICOM
122.8 (CTAF) 



ELEV 691

TDZE 691

3900 X 75



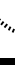

27

81

4002 X 75

36

269°

3000	OFBEP	VGSI and descent angles not coincident (VGSI Angle 3.00/TCH 24).		4 NM Holding Pattern
				
1.3 NM to RW27		OMPIY	AFGUZ	
				
RW27		2300		
1.3		3.7 NM		6.1 NM
CATEGORY	A	B	C	D
LNAV MDA	1120-1	429 (500-1)	1120-1 1/4 429 (500-1 1/4)	NA