

WAAS CH 58203 W18A	APP CRS 179°	Rwy Idg 4002 TDZE 686 Apt Elev 691
--	------------------------	---

RNAV (GPS) RWY 18
LITCHFIELD MUNI (3LF)

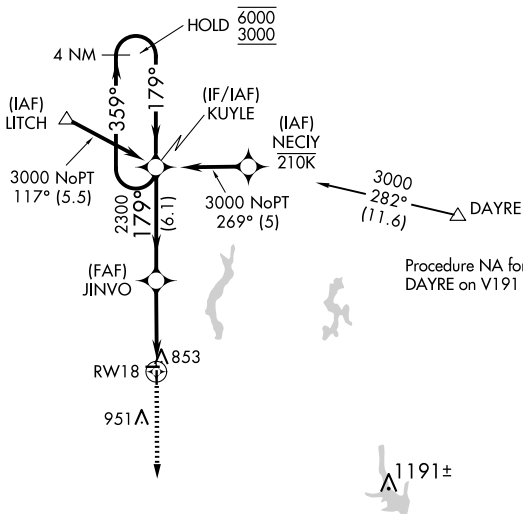
RNP APCH - GPS.

⚠ Baro-VNAV and VDP NA when using Taylorville altimeter setting. Rwy 18 helicopter visibility reduction below $\frac{3}{4}$ SM NA. For uncompensated Baro-VNAV systems, LNAV/VNAV NA below -16°C or above 54°C . When local altimeter setting not received, use Taylorville altimeter setting and increase LPV DA to 1025 feet and all visibilities $\frac{1}{8}$ SM, increase LNAV/VNAV DA to 1146 feet and all visibilities $\frac{1}{4}$ SM, increase all MDAs 80 feet and LNAV visibility Cat C $\frac{1}{8}$ SM.

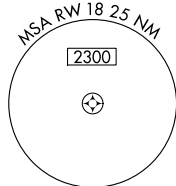
MISSED APPROACH: Climb to 3000 direct OREPE and hold.

AWOS-3PT 118.175	ST. LOUIS APP CON 124.2 353.9	UNICOM 122.8 (CTAF) 0
----------------------------	---	--

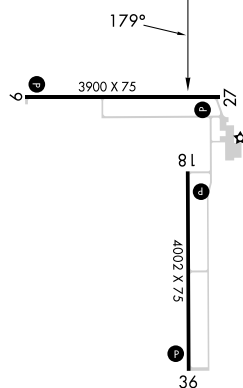
Procedure NA for arrivals at
LITCH on V69 northeast bound.



Procedure NA for arrivals at
DAYRE on V191 northeast bound.



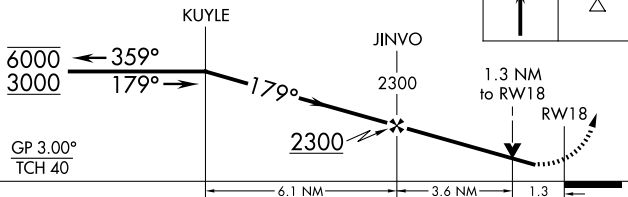
ELEV 691		TDZE 686
----------	--	----------

4 NM
Holding Pattern

VGSI and RNAV glidepath not coincident
(VGSI Angle 3.00/TCH 23).

3000

OREPE



CATEGORY	A	B	C	D
LPV DA	952- $\frac{7}{8}$	266 (300- $\frac{7}{8}$)		NA
RNAV/ VNAV DA	1073-1 $\frac{1}{8}$	387 (400-1 $\frac{1}{8}$)		NA
RNAV MDA	1120-1	434 (500-1)	1120-1 $\frac{1}{4}$ 434 (500-1 $\frac{1}{4}$)	NA

MIRL Rwy 9-27 and 18-36 **L**
REIL Rwy 9, 18, 27 and 36 **L**