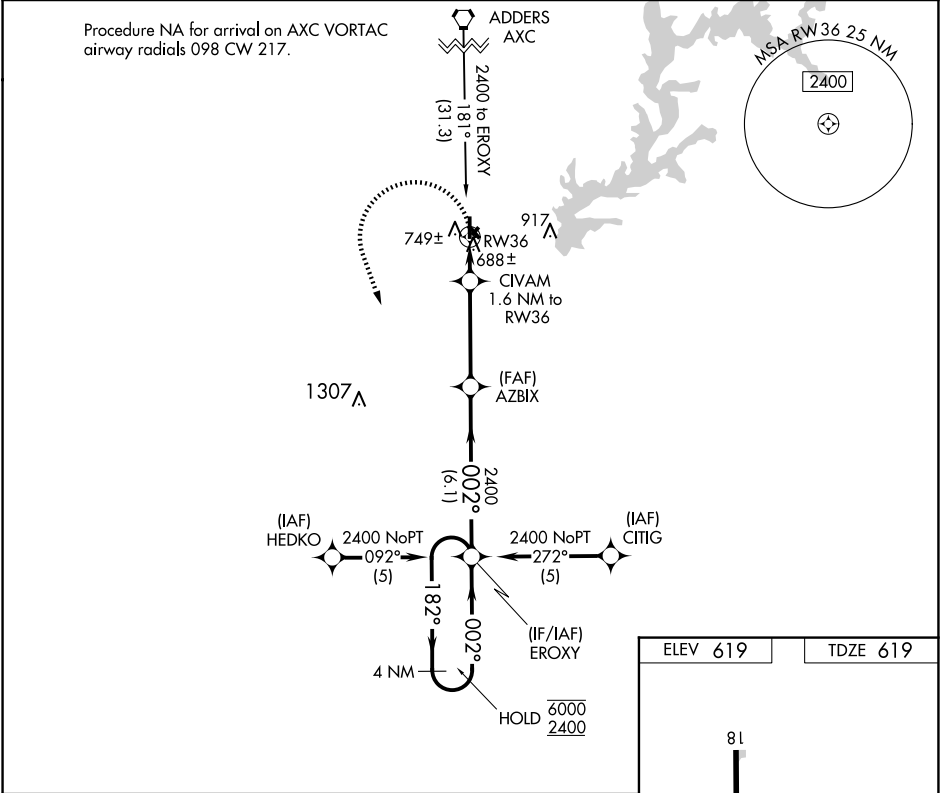


APP CRS	Rwy Ldg	4098
002°	TDZE	619
	Apt Elev	619

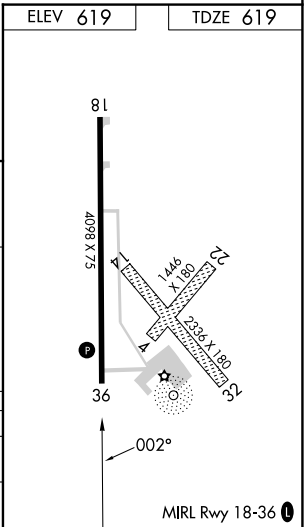
RNAV (GPS) RWY 36
SHELBY COUNTY (2H0)

RNP APCH - GPS.	MISSED APPROACH: Climbing left turn to 2400 direct EROXY and hold.
▼ ▲ NA	Circling NA to Rwy 4, 14, 22, and 32. Use Decatur altimeter setting, when not received use Mattoon/Charleston altimeter setting and increase all MDAs 20 feet, and Circling Cat C visibility ¼ SM. Rwy 36 helicopter visibility reduction below 1 SM NA. Straight-in and Circling Rwy 36 NA at night.

DEC ASOS 126.35	KANSAS CITY CENTER 124.3 269.15	UNICOM 122.8 (CTAF) 0
--------------------	------------------------------------	--------------------------



VGSi and descent angles not coincident (VGSi Angle 4.00/TCH 29).				2400	EROXY
4 NM Holding Pattern					
EROXY				AZBIX	
6000 ← 182°				002° → 2400	
2400				1160	
6.1 NM				3.8 NM	1.6 NM
CATEGORY	A	B	C	D	
LNAV MDA	1080-1	461 (500-1)	1080-1 3/8 461 (500-1 3/8)	NA	
CIRCLING	1280-1	661 (700-1)	1340-2 721 (800-2)	NA	



EC-3, 10 JUL 2025 to 07 AUG 2025

EC-3, 10 JUL 2025 to 07 AUG 2025