

CAMP MACKALL, NORTH CAROLINA

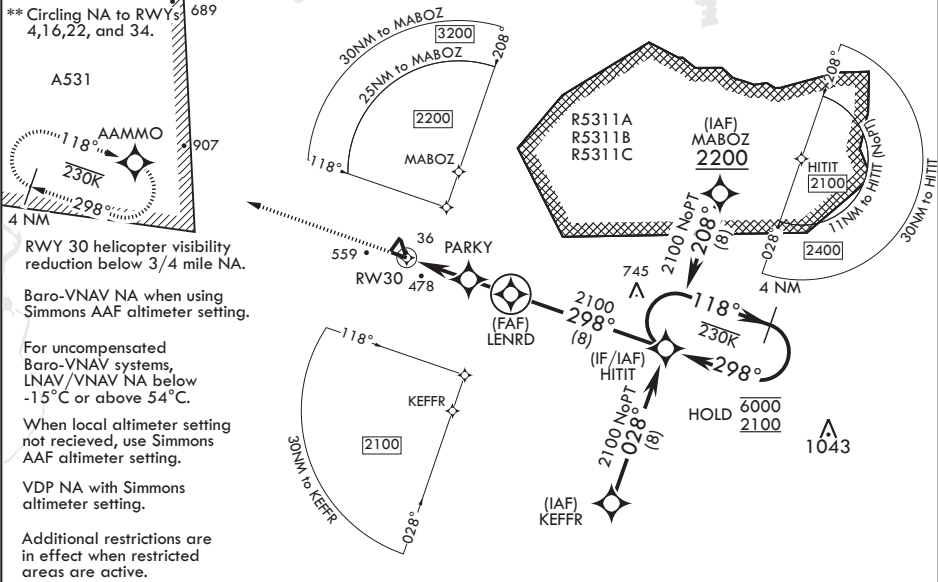
WAAS CH 51219 W30A	APCH CRS 298°	Rwy ldg TDZE Arpt Elev	4794 352 376
--------------------------	------------------	------------------------------	--------------------

AL-6315 (USA)

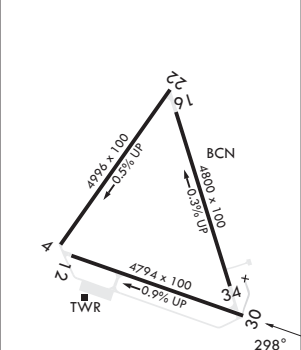
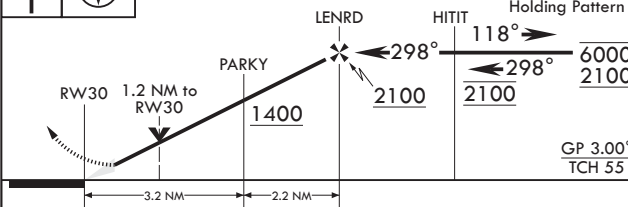
MACKALL AAF (KHFF)

RNP APCH-GPS	MISSED APPROACH: Climb to 2400 direct AAMMO and hold.
RADAR required when special use space active.	
▼ * When tower closed, increase vis to 1 mile.	

D-ATIS 141.4	FAYETTEVILLE APP CON/DEP CON 127.8 343.725	TOWER★ 121.0 (CTAF) 254.4	GND CON 128.35 251.05
-----------------	---	------------------------------	--------------------------



ELEV 376	TDZE 352
----------	----------



CATEGORY	A	B	C	D
LPV DA*	602-3/4	250	(300-3/4)	
LNAV/VNAV DA	793-1 1/8	441	(500-1%)	
LNAV MDA	760-1 408 (400-1)	760-1 1/8 408 (400-1%)		
CIRCLING**	860-1 484 (500-1)	880-1 504 (600-1)	980-1 604 (700-1 1/4)	1040-2 664 (700-2)
SIMMONS AAF ALTIMETER SETTING MINIMUMS				
LPV DA	686-1	334	(400-1)	
LNAV/VNAV DA	860-1 1/8	508	(500-1%)	
LNAV MDA	860-1 508 (500-1)	860-1 1/8 508 (500-1%)		
CIRCLING**	960-1 584 (600-1)	980-1 604 (700-1)	1080-2 704 (800-2)	1140-2 1/2 764 (800-2 1/2)

MIRL Rwy 12-30

CAMP MACKALL, NORTH CAROLINA

35°02'N - 79°30'W

MACKALL AAF (KHFF)

Amdt 1 07SEP23

RNAV (GPS) RWY 30

SE-2, 10 JUL 2025 to 07 AUG 2025

SE-2, 10 JUL 2025 to 07 AUG 2025