

WAAS CH 65720 W15A	APP CRS 152°	Rwy Ldg TDZE Apt Elev 5100 58 58
--	------------------------	--

RNAV (GPS) RWY 15

SCAPPOOSE (SPB)

RNP APCH-GPS.

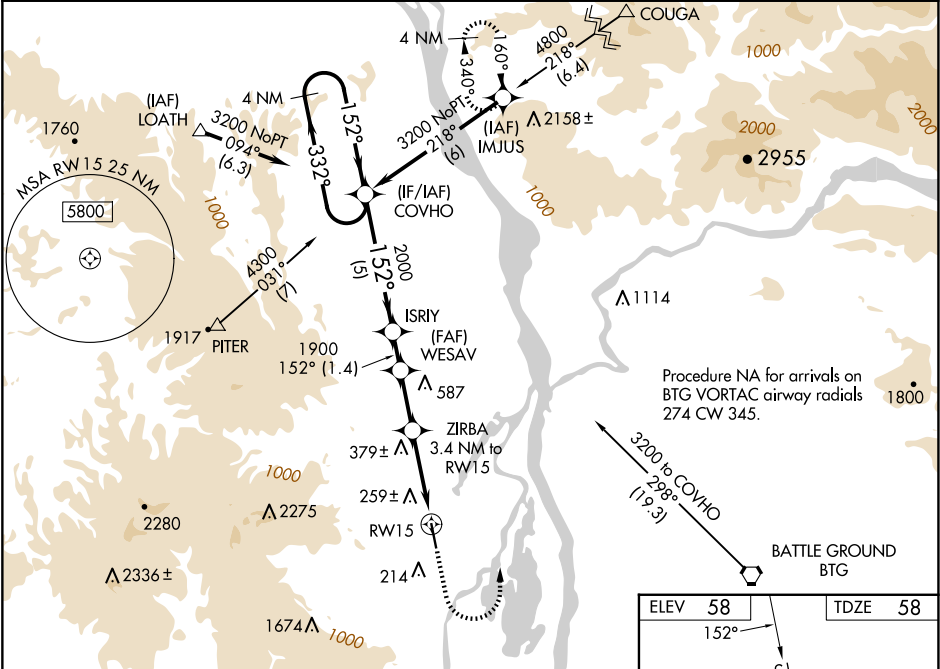
▼

▲

Circling NA west of Rwy 15-33. Rwy 15 helicopter visibility reduction below 1 SM NA. When VGSi inop, Straight-in and Circling to Rwy 15 NA at night. When local altimeter setting not received, use Portland Intl altimeter setting; increase all DA/MDA 40 feet and increase LNAV/VNAV all Cats visibility 1/8 SM, Circling Cat D visibility 1/4 SM. For uncompensated Baro-VNAV systems, LNAV/VNAV NA below -15°C (5°F) or above 42°C (107°F).

MISSED APPROACH:
Climb to 700 then climbing left turn to 3600 direct IMJUS and hold.

ASOS 135.875	PORTLAND APP CON 124.35 299.2	CLNC DEL 121.65	UNICOM 122.8 (CTAF) 0
------------------------	---	---------------------------	--



4 NM Holding Pattern

VGSi and RNAV glidepath not coincident (VGSi Angle 3.73/TCH 41).

COVHO

ISRIY

WESAV

ZIRBA

RWY 15

3200

332°

152°

2000

1900

1180

3.4 NM

GP 3.01°

TCH 54

5 NM

1.4 NM

2.2 NM

3.4 NM

CATEGORY	A	B	C	D
LPV DA		350-1	292 (300-1)	
LNAV/VNAV DA		580-1 3/4	522 (600-1 3/4)	
LNAV MDA	640-1	582 (600-1)	640-1 3/4	582 (600-1 3/4)
CIRCLING	660-1	602 (700-1)	660-1 3/4 602 (700-1 3/4)	860-2 1/2 802 (900-2 1/2)

ELEV 58 TDZE 58

152°

SL

33

0.6% UP

REIL Rwy 15 0

MIRL Rwy 15-33 0