

WAAS CH <b>90216</b> <b>W27A</b>	APP CRS <b>274°</b>	Rwy Idg <b>5390</b> TDZE <b>552</b> Apt Elev <b>569</b>
--	------------------------	---

RNAV (GPS) RWY 27

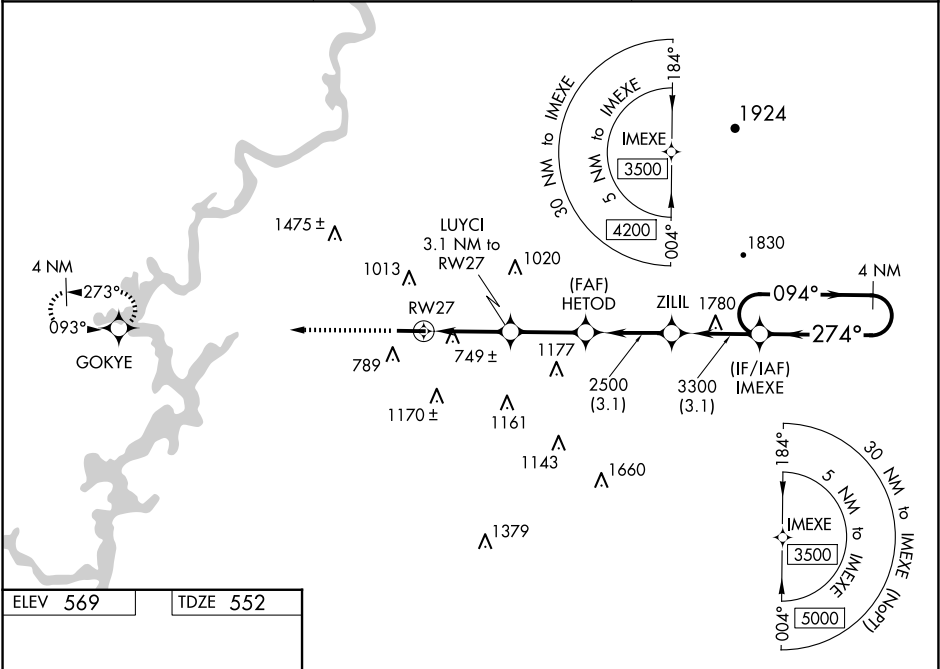
MERKEL FLD SYLACAUGA MUNI (SCD)

▼ For uncompensated Baro-VNAV systems, LNAV/VNAV NA below -16°C (4°F) or above 48°C (118°F). Baro-VNAV and VDP NA when using Birmingham altimeter setting.

▲ DME/DME RNP-0.3 NA. When local altimeter setting not received, use Birmingham altimeter setting and increase LPV DA to 889 feet, LNAV/VNAV DA to 1161 feet, and all visibilities ¾ mile. Increase all MDA 100 feet and LNAV Cat C and D visibilities ¼ mile.

MISSED APPROACH:  
Climb to 3200 direct  
GOKYE and hold.

AWOS-3PT <b>119.125</b>	BIRMINGHAM APP CON <b>123.8 256.8</b>	UNICOM <b>122.8 (CTAF) 0</b>
----------------------------	--	---------------------------------



ELEV 569    TDZE 552

☆

274° to RW27

0.4% UP

5390 X 100

27

3200

GOKYE

VGSI and RNAV glidepath not coincident (VGSI Angle 3.00/TCH 40).

4 NM Holding Pattern

\*LNAV only.

LUYCI 3.1 NM to RW27

HETOD 2500

ZILIL 3300

IMEXE 3500

GP 3.10° TCH 48

1.3 NM

1.8 NM

2.7 NM

3.1 NM

3.1 NM

CATEGORY	A	B	C	D
LPV DA		802-¾	250 (300-¾)	
LNAV/VNAV DA		1074-1¾	522 (600-1¾)	
LNAV MDA	1000-1	448 (500-1)	1000-1⅜	448 (500-1⅜)
CIRCLING	1140-1 571 (600-1)	1400-1¼ 831 (900-1¼)	1620-3 1051 (1100-3)	1700-3 1131 (1200-3)