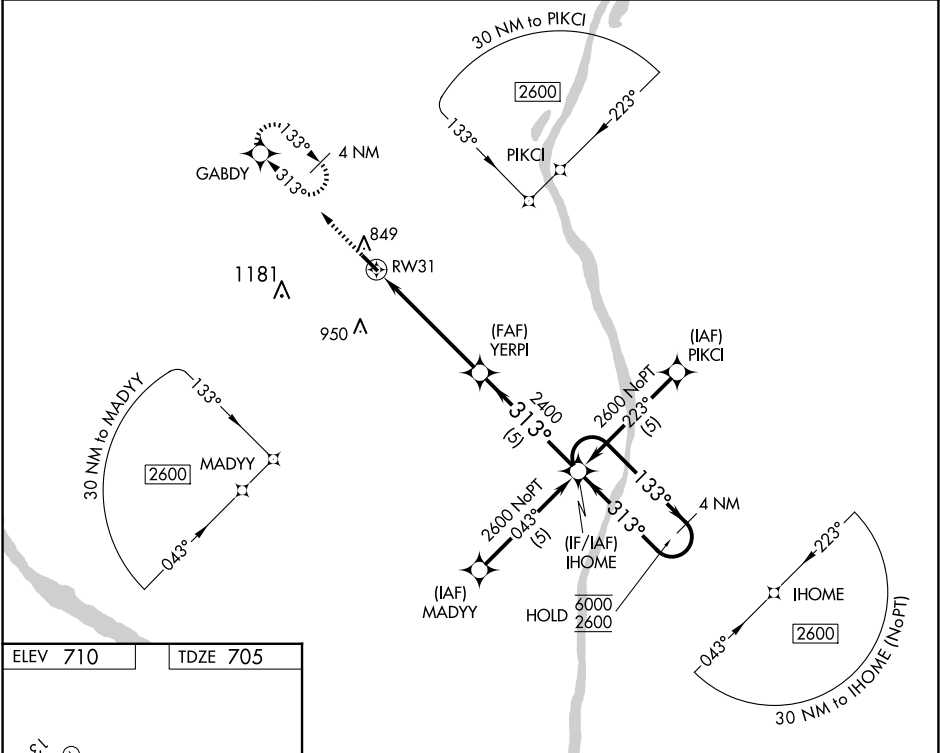


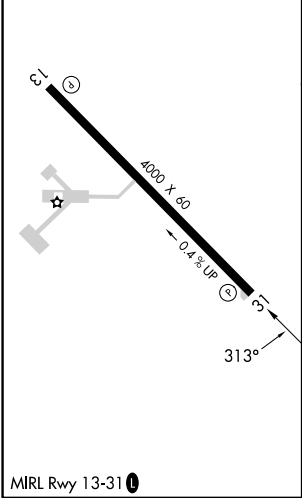
APP CRS	Rwy Idg	4000
313°	TDZE	705
	Apt Elev	710

RNAV (GPS) RWY 31  
PITTSFIELD PENSTONE MUNI (PPQ)

RNP APCH. ▼ For uncompensated Baro-VNAV systems, LNAV/VNAV NA below -16°C or above 54°C.		MISSED APPROACH: Climb to 2600 direct GABDY and hold.
AWOS-3PT 118.525	KANSAS CITY CENTER 126.225 317.775	UNICOM 122.8 (CTAF) 0



ELEV 710	TDZE 705
----------	----------



2600 ↑ GABDY		VGSi and RNAV glidepath not coincident (VGSi Angle 3.00/TCH 29).		4 NM Holding Pattern	
* LNAV only.		IHOME			
RW31		YERPI 2400		133° → 6000 ← 313° 2600	
1.4 NM to RW31		2400		GP 3.00° TCH 40	
1.4 NM		3.8 NM		5 NM	
CATEGORY	A	B	C	D	
LNAV/ VNAV DA	970-1 265 (300-1)			NA	
LNAV MDA	1160-1	455 (500-1)	1160-1 <sup>3</sup> / <sub>8</sub> 455 (500-1 <sup>3</sup> / <sub>8</sub> )	NA	
CIRCLING	1160-1 450 (500-1)	1240-1 530 (600-1)	1340-1 <sup>3</sup> / <sub>4</sub> 630 (700-1 <sup>3</sup> / <sub>4</sub> )	NA	