

WAAS CH <b>42637</b> <b>W04A</b>	APP CRS <b>038°</b>	Rwy Idg TDZE Apt Elev	<b>5004</b> <b>2387</b> <b>2396</b>
--	------------------------	-----------------------------	---

RNAV (GPS) RWY 4  
HEMPHILL COUNTY (HHF)

RNP APCH - GPS.

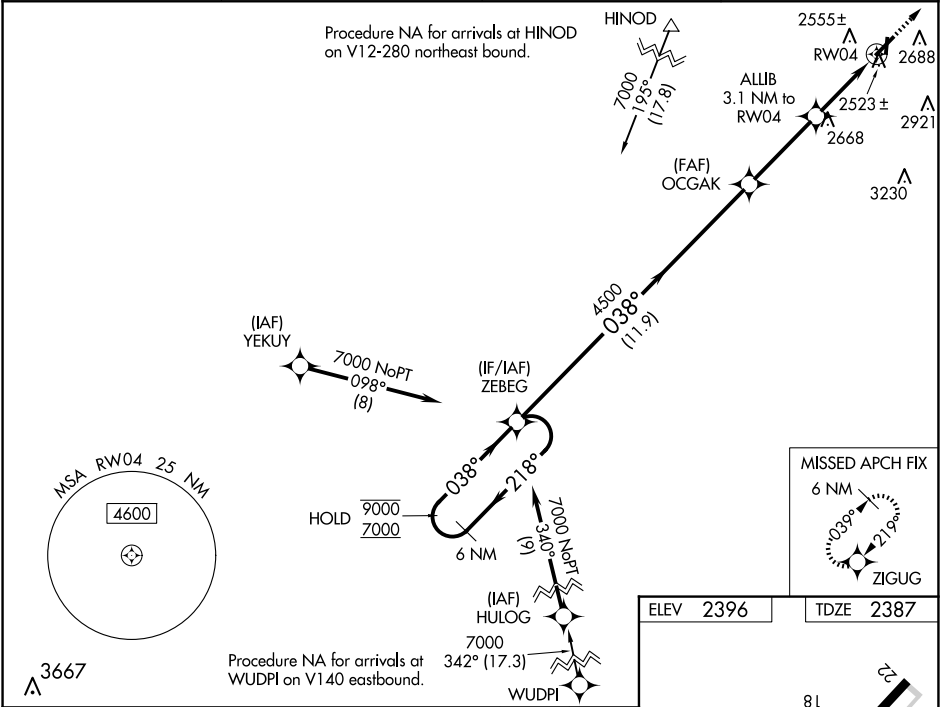
▼

⚠

Circleing NA to Rwy 18 and 36. For uncompensated Baro-VNAV systems, LNAV/VNAV NA below -19°C or above 54°C. When local altimeter setting not received, use Gage altimeter setting and increase LPV DA to 2751; increase LNAV/VNAV DA to 2798 feet and all visibilities ¾ SM. Increase all MDAs 120 feet and LNAV visibility Cat C/D ¼ SM, and Circleing visibility Cat C ¼ SM. VDP and Baro-VNAV NA when using Gage altimeter setting.

MISSED APPROACH:  
Climb to 7000 direct ZIGUG and hold, continue climb-in-hold to 7000.

AWOS-3 <b>119.025</b>	ALBUQUERQUE CENTER <b>127.85 285.475</b>	KANSAS CITY CENTER <b>126.95 379.2</b>	CTAF <b>122.9 0</b>
--------------------------	---	---	------------------------



6 NM Holding Pattern		ZEBEG		7000		ZIGUG	
9000 ← 218°		OCGAK 4500		ALLIB 3.1 NM to RW04		1.1 NM to RW04	
7000 → 038°							
GP 3.00° TCH 38		4500		3400		RW04	
		11.9 NM		3.4 NM		2 NM	
						1.1	
CATEGORY		A		B		C	
LPV DA		2637-1		250 (300-1)			
LNAV/ VNAV DA		2684-1		297 (300-1)			
LNAV MDA		2780-1 393 (400-1)		2780-1½ 393 (400-1½)			
CIRCLING		3040-1 644 (700-1)		3280-2¾ 884 (900-2¾)		3340-3 944 (1000-3)	

ELEV 2396 TDZE 2387

MIRL Rwy 4-22 and 18-36 0  
REIL Rwy 4 and 22

SC-2, 10 JUL 2025 to 07 AUG 2025

SC-2, 10 JUL 2025 to 07 AUG 2025