

|  |                        |   |
|--|------------------------|---|
| WAAS<br>CH <b>48837</b><br><b>W22A</b> | APP CRS<br><b>218°</b> | Rwy Idg<br>TDZE <b>2382</b><br>Apt Elev <b>2396</b> |
|--|------------------------|---|

RNAV (GPS) RWY 22

HEMPHILL COUNTY (HHF)

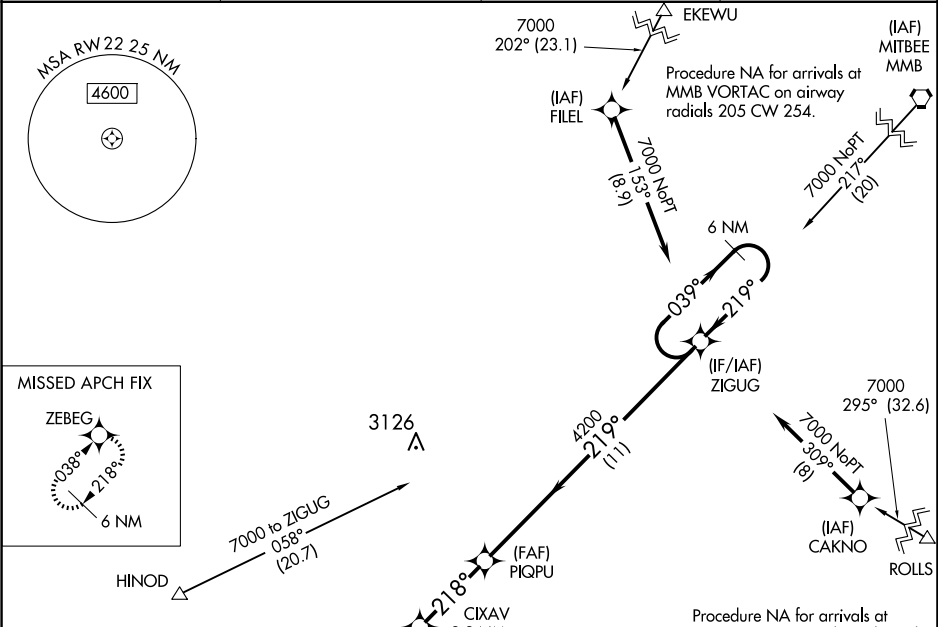
▼

⚠

DME/DME RNP-0.3 NA. When local altimeter setting not received, use Gage altimeter setting and increase all MDA 120 feet, increase LP and LNAV visibility Cat C and D ⅓ mile and Circling Cat C ½ mile. Helicopter visibility reduction below ¾ SM NA. Circling Rwy 18, 36 NA at night.

MISSED APPROACH: Climb to 7000 direct ZEBEG and hold, continue climb-in-hold to 7000.

|                          |   |   |                      |
|--------------------------|---|---|----------------------|
| AWOS-3<br><b>119.025</b> | ALBUQUERQUE CENTER<br><b>127.85 285,475</b> | KANSAS CITY CENTER<br><b>126.95 379.2</b> | CTAF<br><b>122.9</b> |
|--------------------------|---|---|----------------------|



|           |           |
|-----------|-----------|
| ELEV 2396 | TDZE 2382 |
|-----------|-----------|

7000

ZEBEG

CIXAV 2.3 NM to RW22

PIQPU

ZIGUG

6 NM Holding Pattern

3140

4200

7000

218°

219°

039°

219°

2.3 NM

3.3 NM

11 NM

| CATEGORY | A      | B           | C                       | D                      |
|----------|--------|-------------|-------------------------|------------------------|
| LP MDA   | 2800-1 | 418 (500-1) | 2800-1⅓                 | 418 (500-1⅓)           |
| LNAV MDA | 2860-1 | 478 (500-1) | 2860-1⅓                 | 478 (500-1⅓)           |
| CIRCLING | 3040-1 | 644 (700-1) | 3280-2¾<br>884 (900-2¾) | 3340-3<br>944 (1000-3) |

REIL Rwy 4 and 22  
MIRL Rwy 4-22 and 18-36