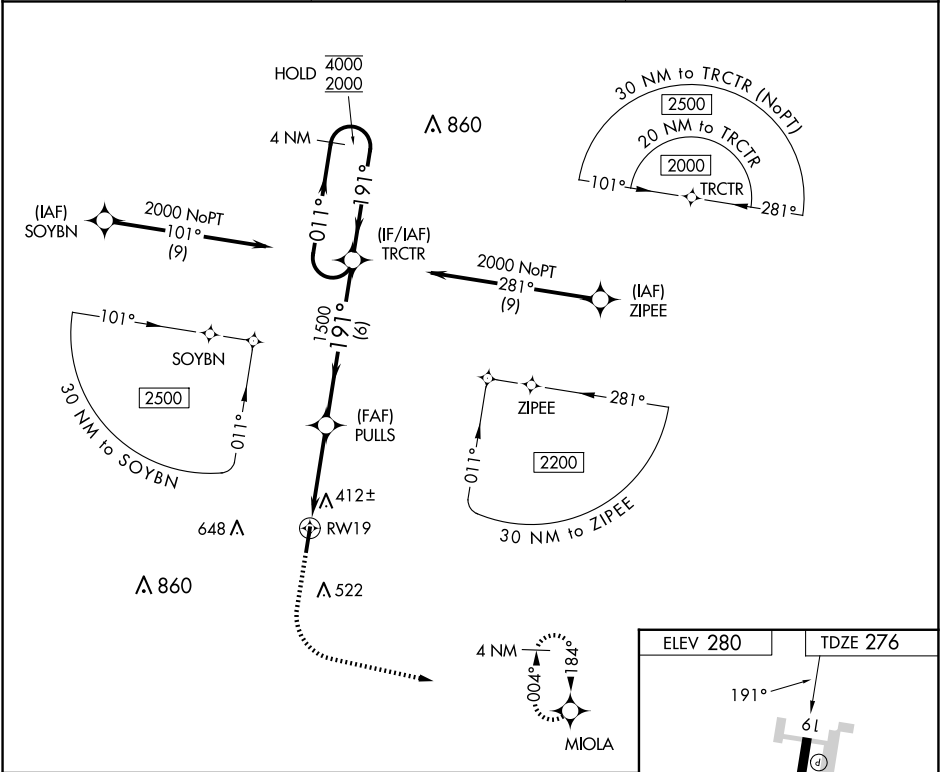


APP CRS	Rwy Idg	5003
191°	TDZE	276
	Apt Elev	280

RNAV (GPS) RWY 19

COVINGTON MUNI (M04)

RNP APCH - GPS.		MISSED APPROACH: Climb to 1400 then climbing left turn to 3000 direct MIOLA and hold.
	Rwy 19 helicopter visibility reduction below ¾ SM NA.	
AWOS-3 118.575	MEMPHIS APP CON 125.8 338.3	UNICOM 123.0 (CTAF)



1400	3000	MIOLA	VGSI and descent angles not coincident (VGSI Angle 3.00/TCH 29).		4 NM Holding Pattern
<p>1.2 NM to RWY19 3.00° TCH 40 RWY19 PULLS 1500 191° 011° 4000 2000 TRCTR</p>					
CATEGORY	A	B	C	D	
LNNAV MDA	680-1	404 (400-1)	680-1½	404 (400-1½)	
CIRCLING	760-1 480 (500-1)	840-1 560 (600-1)	960-2 680 (700-2)	960-2¼ 680 (700-2¼)	

