

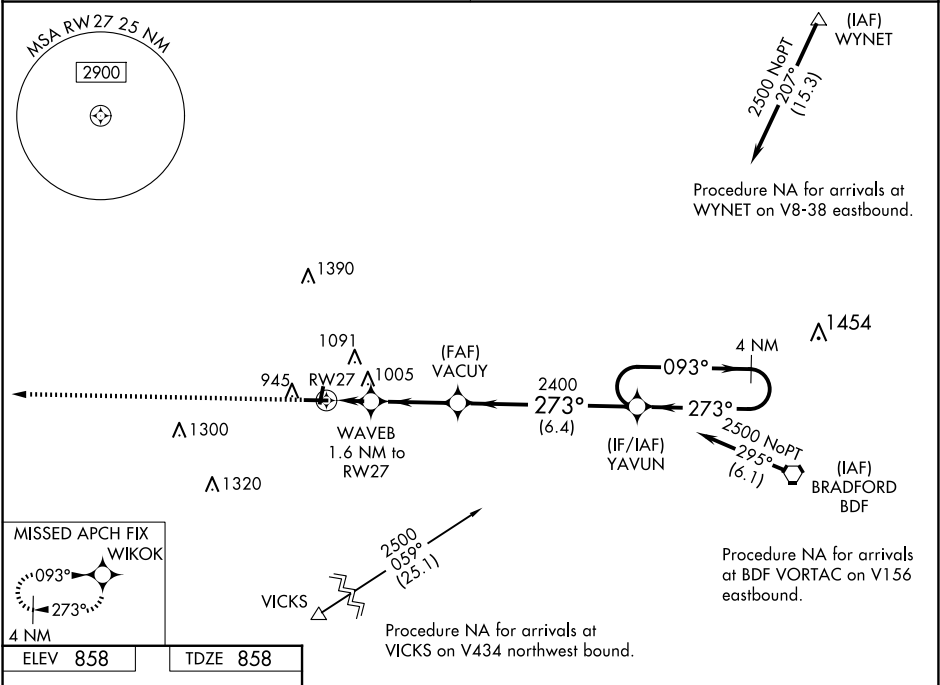
WAAS CH <b>56433</b> <b>W27A</b>	APP CRS <b>273°</b>	Rwy Idg TDZE <b>858</b> Apt Elev <b>858</b>
--	------------------------	---

RNAV (GPS) RWY 27

KEWANEE MUNI (EZI)

<div><div>▼</div><div>▲ NA</div></div> <div>Baro-VNAV NA. DME/DME RNP-0.3 NA. Use Galesburg altimeter setting; when not received, use Moline altimeter setting and increase all DA 29 feet and all MDA 40 feet, increase LPV all Cats and LNAV Cat C visibility 1/8 mile, and Circling Cat C visibility 1/4 mile.</div>	MISSED APPROACH: Climb to 2400 direct WIKOK and hold.
---	--

QUAD CITY APP CON ★ <b>133.275 257.8</b>	UNICOM <b>122.8 (CTAF) 0</b>
---	---------------------------------



2400	WIKOK	VGSI and RNAV glidepath not coincident (VGSI Angle 3.00/TCH 23).			4 NM Holding Pattern
*LNAV only		WAVEB 1.6 NM to RW27	VACUY 2400	YAVUN	
RW27		1.6 NM	3.1 NM	6.4 NM	
CATEGORY		A	B	C	D
LPV DA		1183-1 1/8 325 (400-1 1/8)			NA
LNAV/VNAV DA		1212-1 1/4 354 (400-1 1/4)			NA
LNAV MDA		1340-1	482 (500-1)	1340-1 3/8 482 (500-1 3/8)	NA
CIRCLING		1340-1 482 (500-1)	1520-1 662 (700-1)	1520-1 3/4 662 (700-1 3/4)	NA