

WAAS CH 82335	APP CRS 189°	Rwy Idg TDZE Apt Elev	5000 1077 1077
W19A			

RNAV (GPS) RWY 19

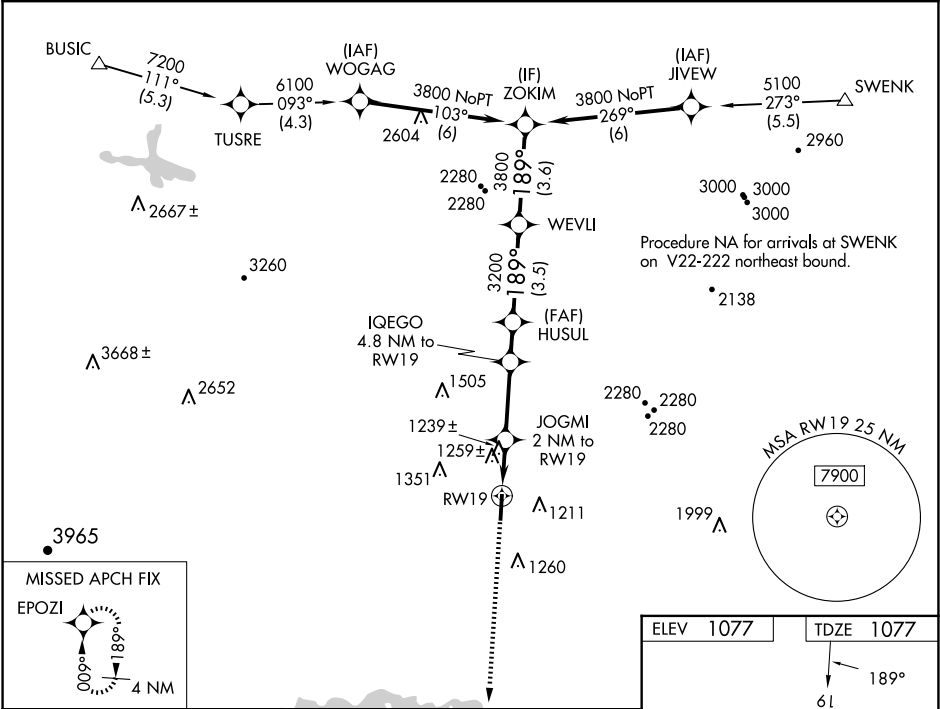
RUTHERFORD COUNTY/MARCHMAN FLD (FQD)

▼

DME/DME RNP-0.3 NA. When local altimeter setting not received, use Shelby-Cleveland County Rgnl altimeter setting and increase all MDA 80 feet and increase LP and LNAV Cat C and D ½ mile, increase Circling Cat C and D visibility ¼ mile. Rwy 19 helicopter visibility reduction below ¾ mile NA.

MISSED APPROACH:
Climb to 3000 direct EPOZI and hold.

AWOS-3 118.275	GREER APP CON ★ 119.4 350.2	UNICOM 122.8 (CTAF) 0
--------------------------	---------------------------------------	---------------------------------



	<div>3000</div> <div>EPOZI</div>	
*LNAV only	<div>JOGMI 2 NM to RW19</div> <div>IQEGO 4.8 NM to RW19</div> <div>HUSUL</div> <div>WEVLI</div> <div>ZOKIM</div>	
	<div>RW19</div> <div>*1 NM to RW19</div> <div>*1780</div> <div>2720</div> <div>3200</div> <div>3800</div> <div>3800</div>	
	<div>1 NM</div> <div>1 NM</div> <div>2.8 NM</div> <div>1.4 NM</div> <div>3.5 NM</div> <div>3.6 NM</div>	
CATEGORY	A	B
LP MDA	1500-1 423 (500-1)	1500-1¼ 423 (500-1¼)
LNAV MDA	1520-1 443 (500-1)	1520-1⅜ 443 (500-1⅜)
CIRCLING	1560-1 483 (500-1)	1620-1 543 (600-1)

	C	D
LP MDA	1500-1¼ 423 (500-1¼)	1520-1⅜ 443 (500-1⅜)
LNAV MDA	1520-1⅜ 443 (500-1⅜)	1560-1 483 (500-1)
CIRCLING	1640-1½ 563 (600-1½)	1820-2½ 743 (800-2½)

