

WAAS CH 40021	APP CRS 009°	Rwy Idg TDZE 1059	5000
W01A		Apt Elev 1077	

RNAV (GPS) RWY 1

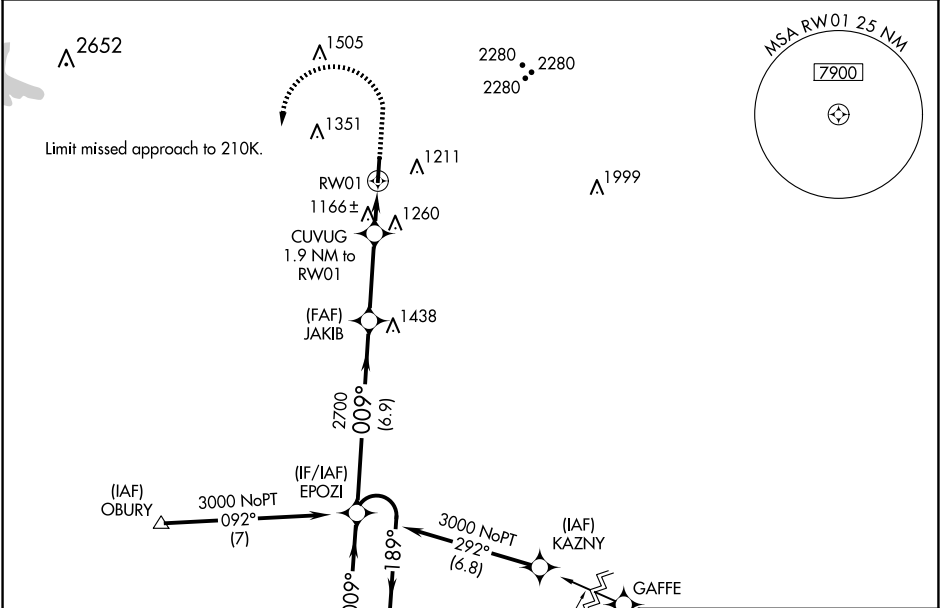
RUTHERFORD COUNTY/MARCHMAN FLD (FQD)

⚠

Baro-VNAV NA when using Shelby-Cleveland County Rgnl altimeter setting. For uncompensated Baro-VNAV systems, LNAV/VNAV NA below-17°C (2°F) or above 54°C (130°F). DME/DME RNP-0.3 NA. When local altimeter setting not received, use Shelby-Cleveland County Rgnl altimeter setting and increase all DA 77 feet, all MDA 80 feet, and increase LPV all Cats, LNAV/VNAV all Cats, LNAV Cats C/D and Circling Cats C/D visibility ¼ mile. VDP NA with Shelby-Cleveland County Rgnl altimeter setting.

MISSED APPROACH: Climb to 1700 then climbing left turn to 3000 direct EPOZI and hold.

AWOS-3 118.275	GREER APP CON ★ 119.4 350.2	UNICOM 122.8 (CTAF) 0
--------------------------	---------------------------------------	---------------------------------



Procedure NA for arrivals at SPA VORTAC on V605 southbound.	ELEV 1077	TDZE 1059
	REIL Rwy 1 and 19 0	
	MIRL Rwy 1-19 0	

4 NM Holding Pattern				
EPOZI				
3000 ← 189° / 009° → 2700				
GP 3.00° TCH 40				
JAKIB 2700, CUVUG 1.9 NM to RW01, SPARTANBURG SPA 1700				
Distances: 6.9 NM, 3.1 NM, 0.9 NM, 1 NM				
CATEGORY	A	B	C	D
LPV DA		1309-7 ³ / ₈	250 (300-7 ³ / ₈)	
LNAV/VNAV DA		1459-13 ³ / ₈	400 (400-13 ³ / ₈)	
LNAV MDA		1420-1	361 (400-1)	
CIRCLING	1560-1 483 (500-1)	1620-1 543 (600-1)	1640-1½ 563 (600-1½)	1820-2½ 743 (800-2½)

