

LOC/DME I-FQD	APP CRS	Rwy Idg	5000
109.55	009°	TDZE	1059
Chan 32(Y)		Apt Elev	1077

LOC RWY 1

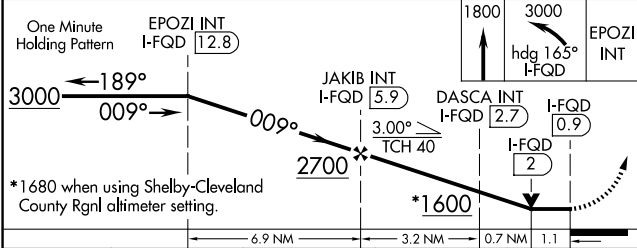
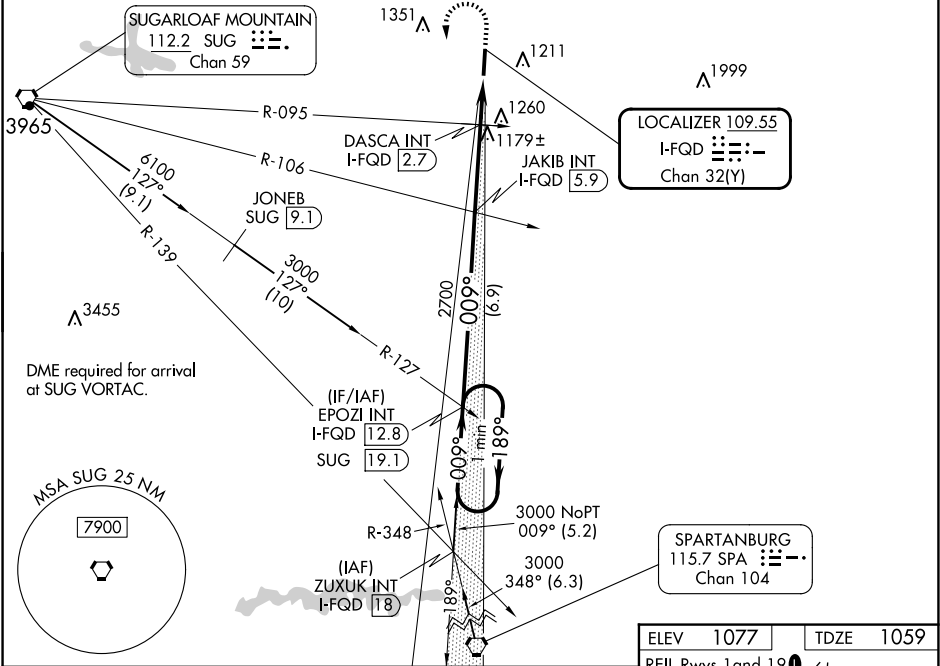
RUTHERFORD COUNTY/MARCHMAN FLD (FQD)

▼ VDP NA with Shelby-Cleveland County Rgnl altimeter setting. When local altimeter setting not received, use Shelby-Cleveland County Rgnl altimeter setting and increase all MDA 80 feet and S-1 Cat C and D and Circling Cat C visibilities  $\frac{1}{8}$  mile; increase Circling Cat D visibility  $\frac{1}{4}$  mile. DASCFA fix minimums: Increase S-1 Cat C and D and Circling Cat C and D visibilities  $\frac{1}{4}$  mile.

▲ NA

MISSED APPROACH: Climb to 1800 then climbing left turn to 3000 on heading 165° and on I-FQD localizer south course to EPOZI INT/I-FQD 12.8 DME and hold.

AWOS-3	GREER APP CON ★	UNICOM
118.275	119.4 350.2	122.8 (CTAF) 0



CATEGORY	A	B	C	D
S-1	1600-1	541 (600-1)	1600-1 $\frac{1}{2}$	541 (600-1 $\frac{1}{2}$ )
◻ CIRCLING	1600-1 523 (600-1)	1620-1 543 (600-1)	1640-1 $\frac{1}{2}$ 563 (600-1 $\frac{1}{2}$ )	1820-2 $\frac{1}{2}$ 743 (800-2 $\frac{1}{2}$ )
DASCFA FIX MINIMUMS (DUAL VOR RECEIVERS OR DME REQUIRED)				
S-1	1440-1	381 (400-1)	1440-1 $\frac{1}{2}$	381 (400-1 $\frac{1}{2}$ )
◻ CIRCLING	1560-1 483 (500-1)	1620-1 543 (600-1)	1640-1 $\frac{1}{2}$ 563 (600-1 $\frac{1}{2}$ )	1820-1 $\frac{1}{2}$ 743 (800-1 $\frac{1}{2}$ )

