

WAAS CH 56312 W07A	APP CRS 072°	Rwy Idg TDZE 913 Apt Elev 913	4703
--	------------------------	---	-------------

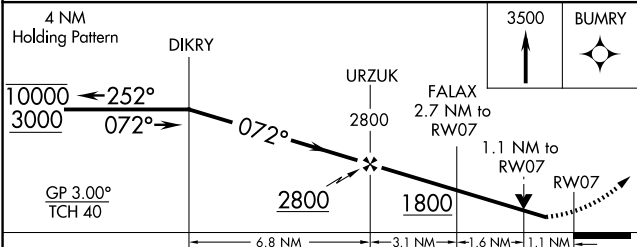
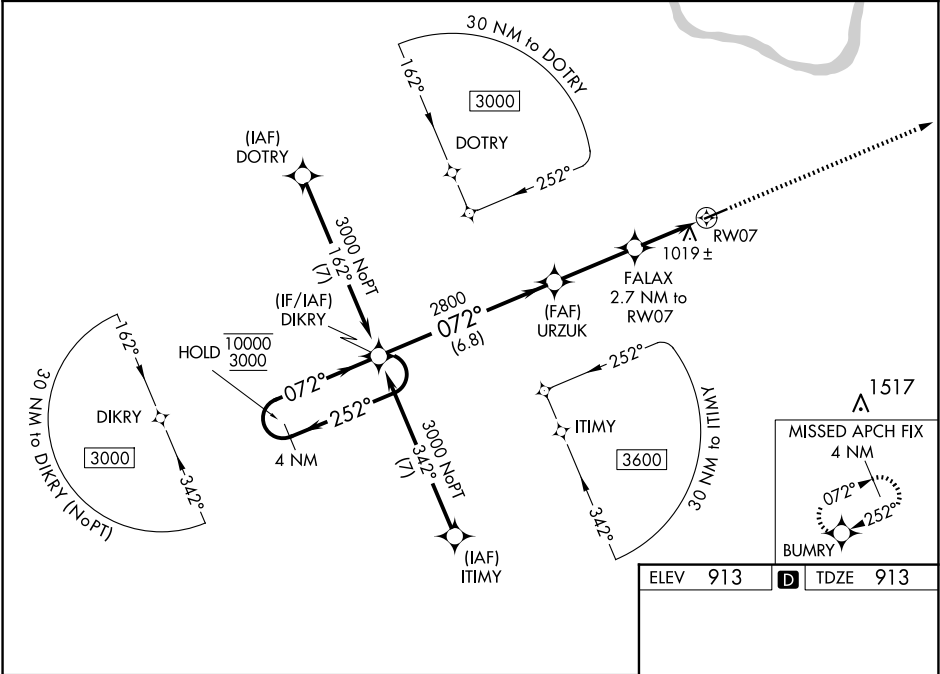
RNAV (GPS) RWY 7
FLEMING-MASON (F'GX)

RNP APCH - GPS.

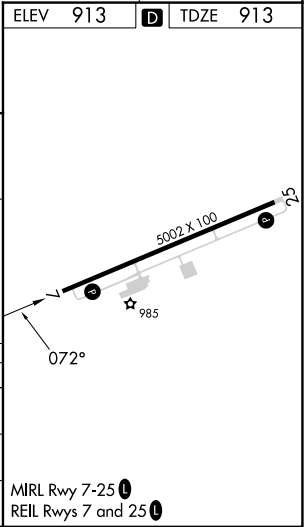
⚠ Baro-VNAV and VDP NA when using Blue Grass altimeter setting. Rwy 7 helicopter visibility reduction below ¾ SM NA. For uncompensated Baro-VNAV systems, LNAV/VNAV NA below -16°C or above 54°C. When local altimeter setting not received, use Lexington altimeter setting and increase LPV DA to 1290 feet and all visibilities ¼ SM; increase LNAV/VNAV DA to 1327 feet and all visibilities ¼ SM; increase all MDAs 140 feet and LNAV visibility Cat C/D ¾ SM.

MISSED APPROACH: Climb to 3500 direct BUMRY and hold.

AWOS-3 118.125	INDIANAPOLIS CENTER 124.225 360.725	UNICOM 123.0(CTAF) 0
--------------------------	---	--------------------------------



CATEGORY	A	B	C	D
LPV DA		1163-¾	250 (300-¾)	
LNAV/VNAV DA		1200-⅞	287 (300-⅞)	
LNAV MDA		1280-1	367 (400-1)	



SE-1, 10 JUL 2025 to 07 AUG 2025

SE-1, 10 JUL 2025 to 07 AUG 2025