

WAAS CH <b>69212</b> <b>W25A</b>	APP CRS <b>252°</b>	Rwy Idg <b>4703</b> TDZE <b>913</b> Apt Elev <b>913</b>
--	------------------------	---

RNAV (GPS) RWY 25  
FLEMING-MASON (FGX)

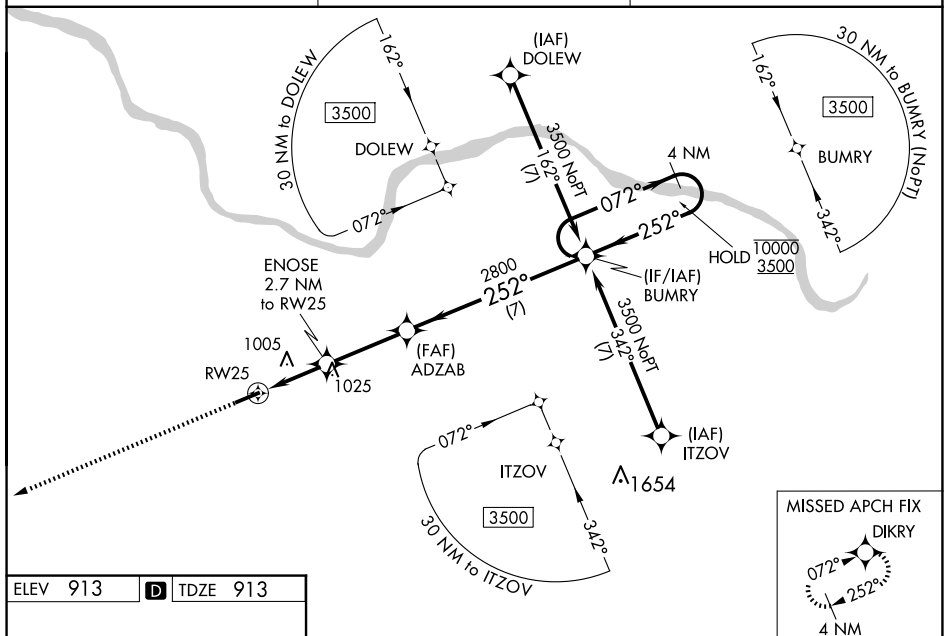
RNP APCH - GPS.

**A** Baro-VNAV and VDP NA when using Blue Grass altimeter setting. For uncompensated Baro-VNAV systems, LNAV/VNAV NA below -16°C or above 54°C. When local altimeter setting not received, use Lexington altimeter setting and increase LPV DA to 1240 feet and all visibilities ¼ SM; increase LNAV/VNAV DA to 1290 feet and all visibilities ¾ SM; increase all MDAs 140 feet and LNAV visibility Cat C/D ¾ SM, and Circling visibility Cat C/D ½ SM.

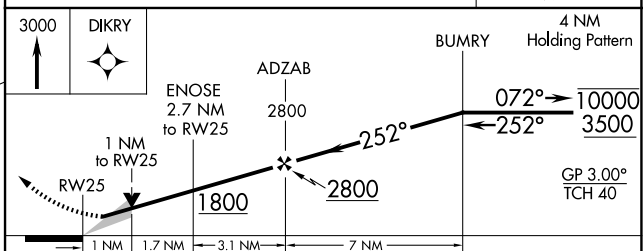
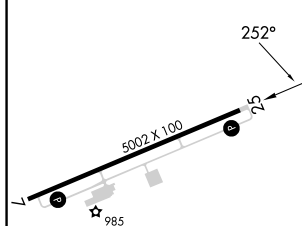
**MISSED APPROACH:**  
Climb to 3000 direct  
DIKRY and hold.

AWOS-3  
118.125

INDIANAPOLIS CENTER  
124.225 360.725

UNICOM  
123.0 (CTAF) 

ELEV 913	<b>D</b>	TDZE 913
----------	----------	----------



CATEGORY	A	B	C	D
LPV DA	1113- <sup>3</sup> / <sub>4</sub> 200 (200- <sup>3</sup> / <sub>4</sub> )			
LNAV/ VNAV DA	1163- <sup>3</sup> / <sub>4</sub> 250 (300- <sup>3</sup> / <sub>4</sub> )			
LNAV MDA	1260-1 347 (400-1)			
CIRCLING	1320-1 407 (500-1)	1380-1 467 (500-1)	1520-1 <sup>3</sup> / <sub>4</sub> 607 (700-1 <sup>3</sup> / <sub>4</sub> )	1520-2 607 (700-2)

MIRL Rwy 7-25 **L**  
REIL Rwy 7 and 25 **L**

FLEMINGSBURG, KENTUCKY  
Amdt 1 30NOV23

38°32'N-83°45'W

FLEMING-MASON (FGX)  
RNAV (GPS) RWY 25

SE-1, 10 JUL 2025 to 07 AUG 2025