

WAAS CH <b>97628</b> <b>W06A</b>	APP CRS <b>058°</b>	Rwy Idg TDZE Apt Elev	<b>5004</b> <b>733</b> <b>733</b>
--	------------------------	-----------------------------	---

RNAV (GPS) RWY 6

DAVIDSON COUNTY EXEC (E.XX)

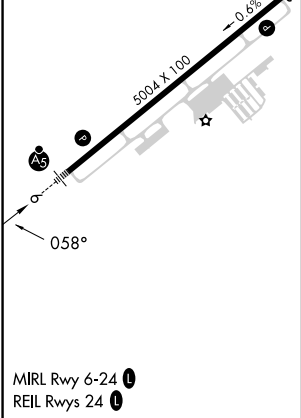
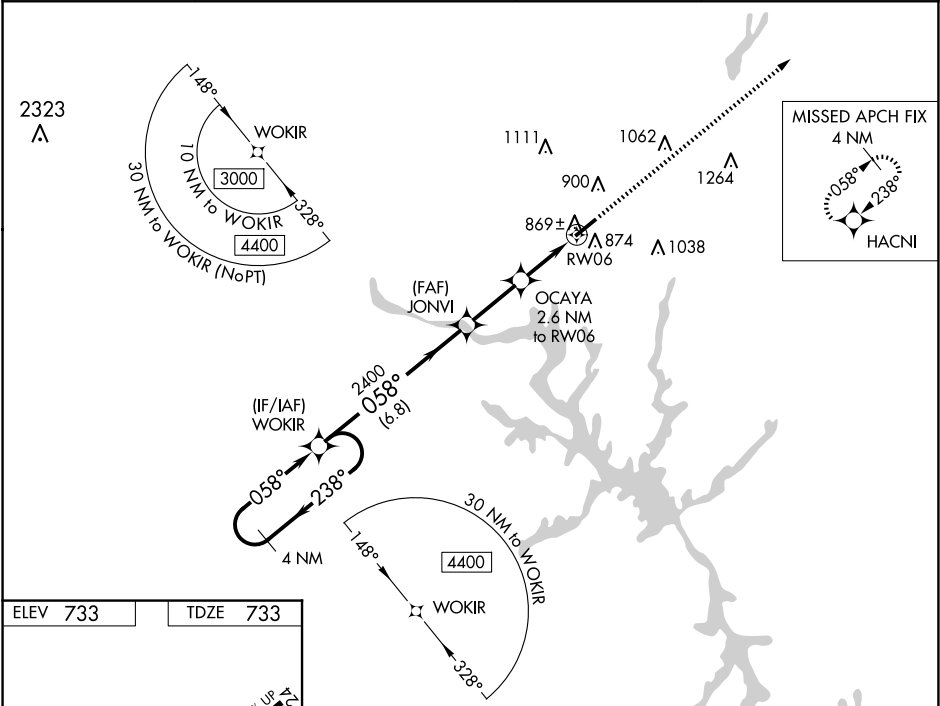
⚠

For uncompensated Baro-VNAV systems, LNAV/VNAV NA below -16°C (4°F) or above 54°C (130°F). When local altimeter setting not received, use Salisbury altimeter setting and increase all DA 37 feet and all MDA 40, increase LPV, LNAV/VNAV all Cats and LNAV Cat C visibility ½ mile. DME/DME RNP-0.3 NA. Baro-VNAV and VDP NA when using Salisbury altimeter setting.

MALSR

MISSED APPROACH:  
Climb to 3000 direct  
HACNI and hold.

AWOS-3 <b>119.825</b>	GREENSBORO APP CON <b>126.6 327.075</b>	GCO <b>135.075</b>	UNICOM <b>122.8 (CTAF) 0</b>
--------------------------	--	-----------------------	---------------------------------



VGSI and RNAV glidepath not coincident (VGSI Angle 4.00/TCH 28).				3000	HACNI
4 NM Holding Pattern WOKIR					
3000 238° 058° 2400 058°				*LNAV only	
GP 3.00° TCH 40				*0.8 NM to RW06	
2400 *1600				RW06	
6.8 NM 2.5 NM 1.8 NM 0.8 NM					
CATEGORY	A	B	C	D	
LPV DA	983-7/8	250 (300-7/8)		NA	
LNAV/VNAV DA	1020-1	287 (300-1)		NA	
LNAV MDA	1120-1	387 (400-1)	1120-1 1/8 387 (400-1 1/8)	NA	
CIRCLING	1220-1 487 (500-1)	1240-1 507 (600-1)	1340-1 3/4 607 (700-1 3/4)	NA	