

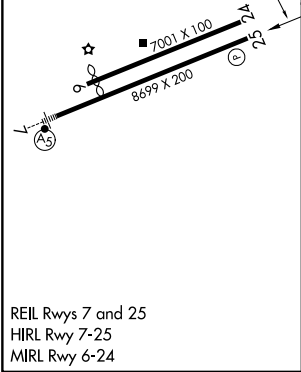
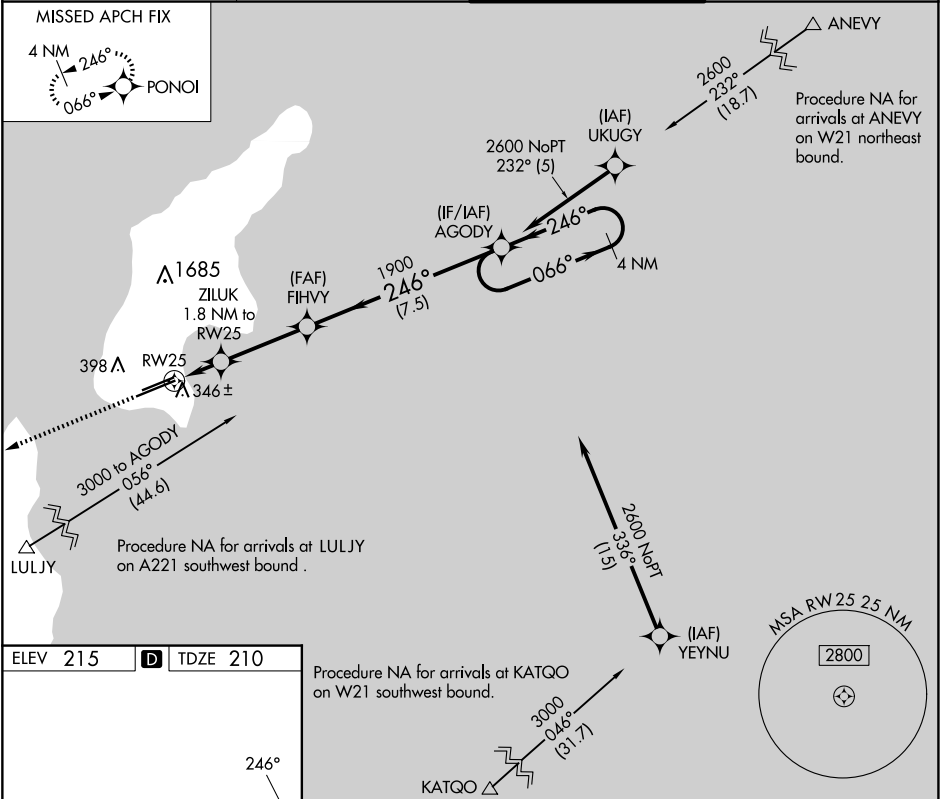
APP CRS	Rwy Ldg	8010
246°	TDZE	210
	Apt Elev	215

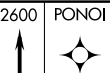
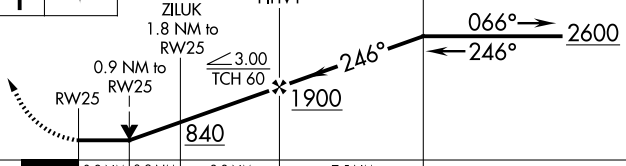

RNAV (GPS) RWY 25

FRANCISCO C ADA/SAIPAN INTL (GSN)(PGSN)

RNP APCH - GPS.	MISSED APPROACH: Climb to 2600 direct PONOI and hold.
Circling NA north of Rwy 6-24. Rwy 25 helicopter visibility reduction below ¾ NA.	

ATIS 127.2	GUAM CERAP 118.4 290.5	SAIPAN TOWER 125.7 256.9	GND CON 121.8
---------------	---------------------------	-----------------------------	------------------



2600 PONOI		VGSI and descent angles not coincident (VGSI Angle 3.00/TCH 75).							
									
CATEGORY		A		B		C		D	
LNAV MDA		600-1 390 (400-1)		600-1½ 390 (400-1½)					
 CIRCLING		720-1 505 (600-1)		720-1½ 505 (600-1½)		780-2 565 (600-2)			