

NDB SN	APP CRS	Rwy Ldg	8010
312	081°	TDZE	215
		Apt Elev	215

NDB Y RWY 7

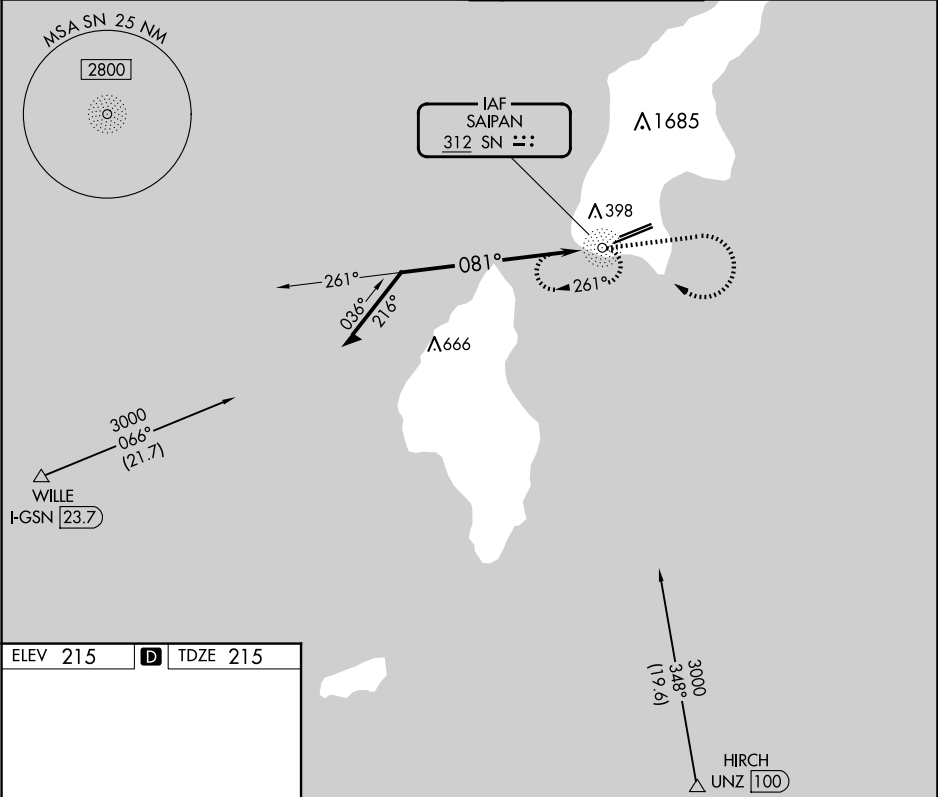
FRANCISCO C ADA/SAIPAN INTL (GSN)(PGSN)

Circling NA north of Rwy 6-24.

MALSR

MISSED APPROACH: Climb to 2400 then climbing right turn to 3000 direct SN NDB and hold.

ATIS 127.2	GUAM CERAP 118.4 290.5	SAIPAN TOWER 125.7 256.9	GND CON 121.8
---------------	---------------------------	-----------------------------	------------------



ELEV 215

D

TDZE 215

REIL Rwy 7 and 25

HIRL Rwy 7-25

MIRL Rwy 6-24

081°

7001 X 100

8699 X 200

Remain within 10 NM

SN NDB

2400

3000

SN

2000

261°

081°

3000

CATEGORY	A	B	C	D
S-7	900-3/4	685 (700-3/4)	900-1 1/2	685 (700-1 1/2)
CIRCLING	900-1	685 (700-1)	900-2	900-2 1/4