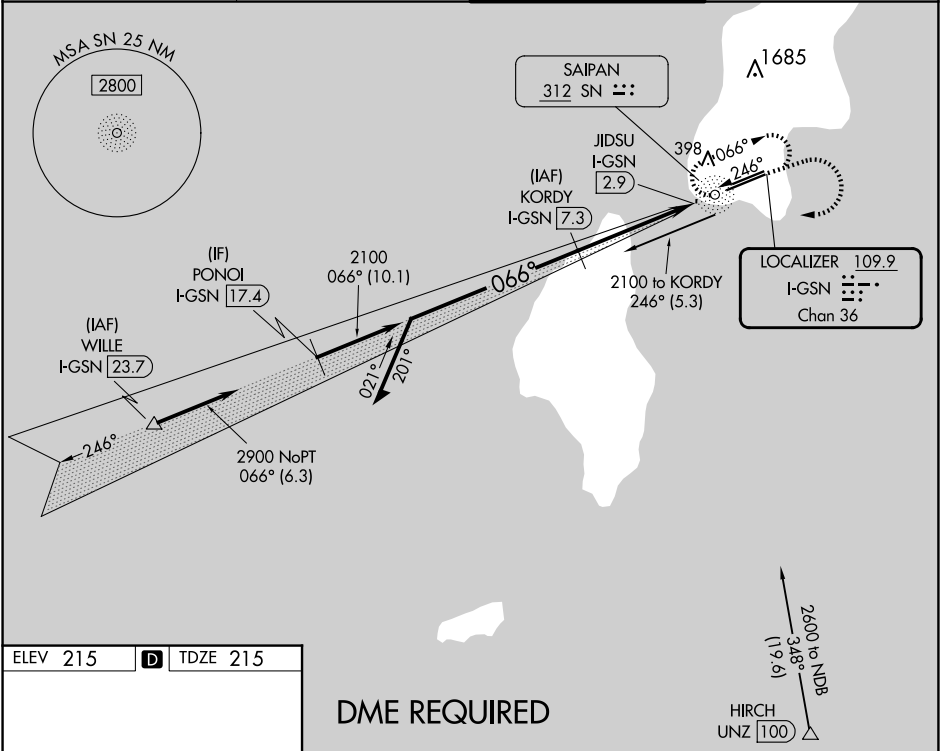


LOC/DME I-GSN	APP CRS	Rwy Ldg
<b>109.9</b>	<b>066°</b>	<b>8010</b>
Chan <b>36</b>		TDZE <b>215</b>
		Apt Elev <b>215</b>

ILS or LOC RWY 7  
FRANCISCO C ADA/SAIPAN INTL (GSN)(PGSN)

<b>NA</b>	Circling NA north of Rwy 6-24. ADF and DME required.	MALSR	MISSED APPROACH: Climb to 1600 then climbing right turn to 2800 direct SN NDB and hold.
-----------	---	-------	---

ATIS <b>127.2</b>	GUAM CERAP <b>118.4 290.5</b>	SAIPAN TOWER <b>125.7 256.9</b>	GND CON <b>121.8</b>
----------------------	----------------------------------	------------------------------------	-------------------------



ELEV 215	<b>D</b>	TDZE 215
----------	----------	----------

DME REQUIRED

Remain within 10 NM	KORDY I-GSN 7.3	1600	2800	SN
2100 066°	2100	JIDSU I-GSN 2.9	* LOC only.	
GS 3.00° TCH 55	2100	* I-GSN 2.3	I-GSN 1.6	
	4.5 NM	0.6 NM	0.7 NM	
CATEGORY	A	B	C	D
S-ILS 7		415-½	200 (200-½)	
S-LOC 7		480-½	265 (300-½)	
<b>C</b> CIRCLING	720-1	505 (600-1)	720-1½ 505 (600-1½)	780-2 565 (600-2)