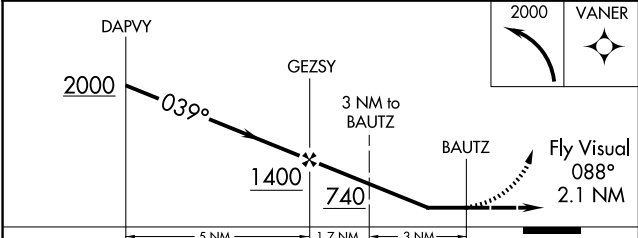
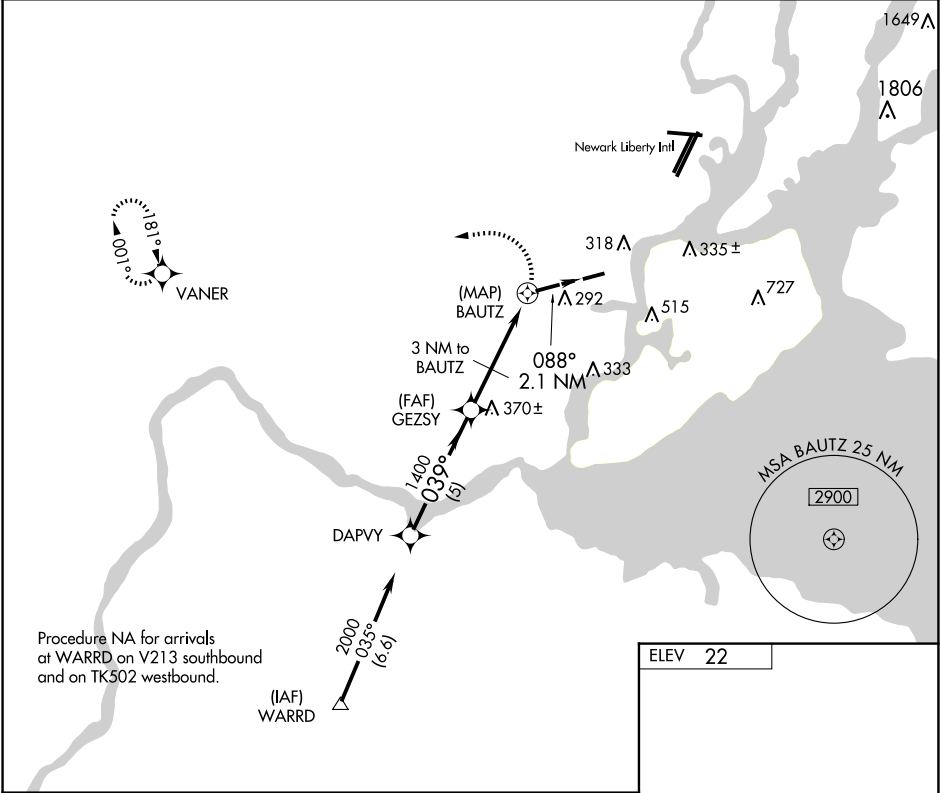


APP CRS	Rwy Idg	N/A
039°	TDZE	N/A
	Apt Elev	22

GPS-A
LINDEN (LDJ)

RNP APCH - GPS		MISSED APPROACH: Climbing left turn to 2000 direct VANER WP and hold.	
▼ ▲ NA		When local altimeter setting not received, use Newark Liberty Intl altimeter setting. Helicopter visibility reduction below 1 SM NA. Procedure NA at night.	
AWOS-3 124.025	NEWARK APP CON 128.55 379.9	CLNC DEL 127.25	UNICOM 123.0 (CTAF) 0



ELEV 22

MIRL Rwy 9-27 0

REIL Rwys 9 and 27 0

NE-2, 10 JUL 2025 to 07 AUG 2025

NE-2, 10 JUL 2025 to 07 AUG 2025