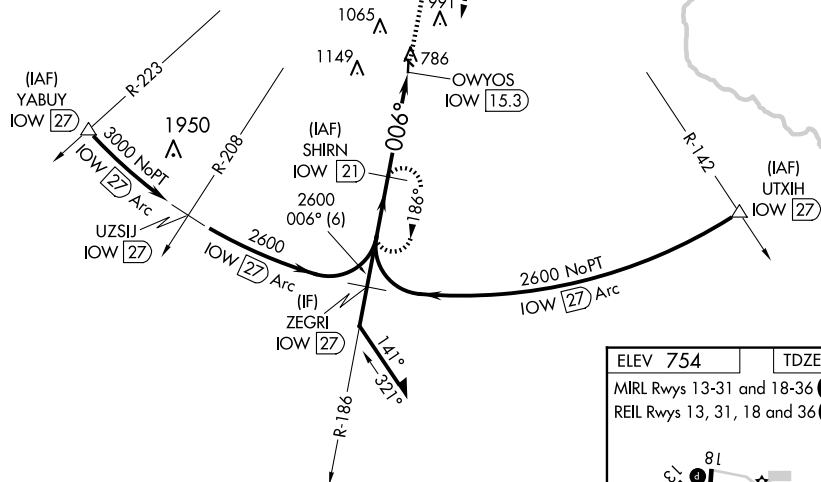
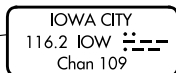



VOR RWY 36
WASHINGTON MUNI (AWG)

MISSED APPROACH: Climb to 2600 then right turn on IOW VOR/DME R-186 to SHIRN/21 DME and hold.

UNICOM
122.7 (CTAF) **L**

The diagram illustrates a ship's heading system with several key components:

- Heading Scale:** A horizontal line at the bottom is labeled "HEADING". It has markings for "006°" and "186°".
- Ship's Position:** A small circle representing the ship is located between two vertical dashed lines.
- Distances:** Two segments are labeled "2600". One segment extends from the left edge to the first vertical dashed line. The other segment extends from the ship's position to the second vertical dashed line.
- Angles:**
 - An angle of "186°" is indicated between the top-left horizontal reference line and the line connecting it to the ship's position.
 - An angle of "006°" is indicated between the top-right horizontal reference line and the line connecting it to the ship's position.
 - A smaller angle of "3.00°" is shown below the ship, between a vertical dashed line and a line extending towards the right.
- Annotations:**
 - "Remain within 10 NM" is written above the top-left horizontal line.
 - "OWYOS IOW (15.3)" is written near the top-right corner, with a curved arrow pointing downwards.
 - "TCH 40" is written below the "3.00°" angle.

CATEGORY	A	B	C	D
S-36	1240-1	488 (500-1)	1240-1 $\frac{3}{8}$ 488 (500-1 $\frac{3}{8}$)	NA
 CIRCLING	1240-1 486 (500-1)	1260-1 506 (600-1)	1500-2 $\frac{1}{4}$ 746 (800-2 $\frac{1}{4}$)	NA

