

WAAS CH 90538 W31A	APP CRS 316°	Rwy Idg 3401 TDZE 754 Apt Elev 754
--	------------------------	---

RNAV (GPS) RWY 31

WASHINGTON MUNI (A WG)

RNP APCH.

▼

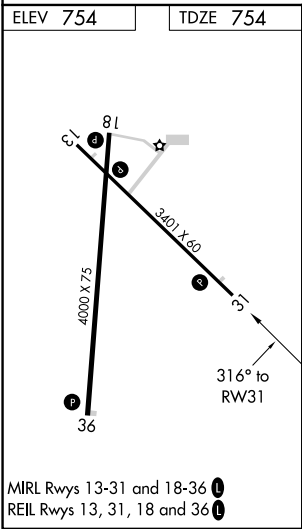
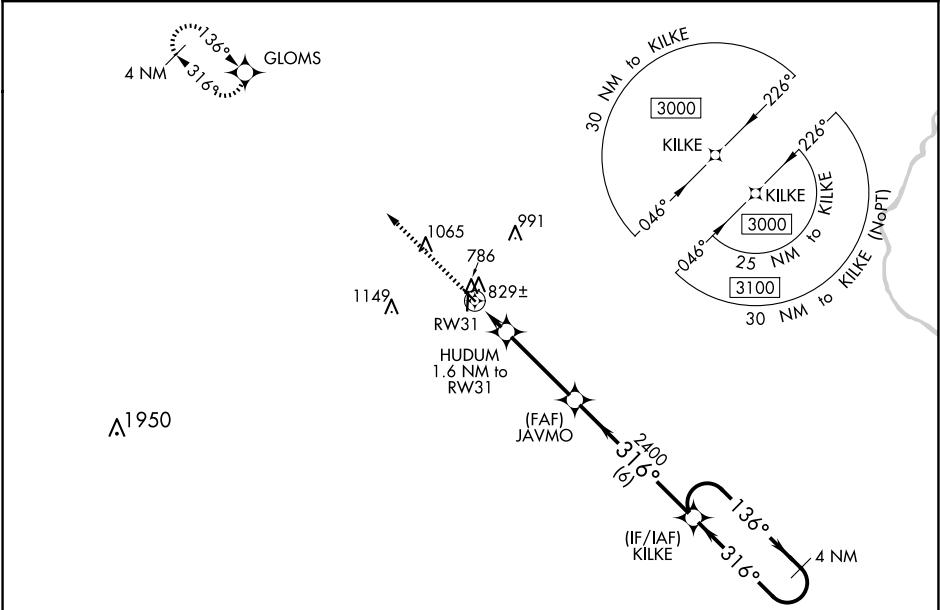
For uncompensated Baro-VNAV systems, LNAV/VNAV NA below -6°C (22°F) or above 54°C (130°F).

▲

Rwy 31 helicopter visibility reduction below ¾ SM NA. Baro-VNAV and VDP NA when using Iowa City altimeter setting. When local altimeter setting not received, use Iowa City altimeter setting: increase LPV and LNAV/VNAV DA to 1066 feet; increase all MDAs 80 feet and visibility LNAV Cat C ¼ SM and Circling Cat C ¼ SM.

MISSED APPROACH:
Climb to 3000 direct GLOMS and hold.

AWOS-3 127.825	CHICAGO CENTER 135.6 370.95	UNICOM 122.7 (CTAF) 0
--------------------------	---------------------------------------	---------------------------------



3000	GLOMS	VGSI and RNAV glidepath not coincident (VGSI Angle 3.00/TCH 30).			
*LNAV only	HUDUM 1.6 NM to RWY 31	JAVMO 2400	KILKE	4 NM Holding Pattern	
*0.9 NM to RWY 31	*1280	2400	316°	136°	3000
GP 3.00° TCH 34					
0.9 NM	0.7 NM	3.5 NM	6 NM		
CATEGORY	A	B	C	D	
LPV DA	1004-1	250 (300-1)		NA	
LNAV/VNAV DA	1004-1	250 (300-1)		NA	
LNAV MDA	1080-1	326 (400-1)		NA	
CIRCLING	1200-1 446 (500-1)	1260-1 506 (600-1)	1500-2¼ 746 (800-2¼)	NA	