

WAAS CH 63138 W13A	APP CRS 136°	Rwy Idg 3401 TDZE 754 Apt Elev 754
--	------------------------	---

RNAV (GPS) RWY 13

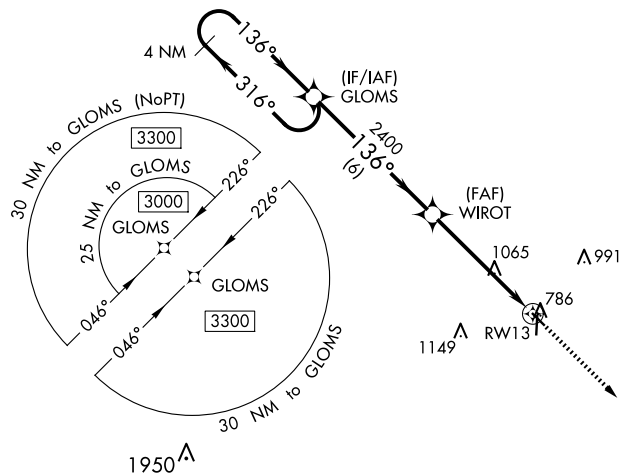
WASHINGTON MUNI (AWG)

RNP APCH.

- ⚠** For uncompensated Baro-VNAV systems, LNAV/VNAV NA below -6°C (22°F) or above 54°C (130°F).
⚠ Baro-VNAV and VDP NA when using Iowa City altimeter setting. When local altimeter setting not received, use Iowa City altimeter setting: increase LPV DA to 1066 feet, LNAV/VNAV DA to 1282 feet; increase all MDAs 80 feet and visibility LNAV and Circling Cat C ¼ SM.

MISSED APPROACH:
Climb to 3000 direct
KILKE and hold.

AWOS-3 127.825	CHICAGO CENTER 135.6 370.95	UNICOM 122.7 (CTAF) ①
--------------------------	---------------------------------------	---------------------------------

[illegible]

ELEV 754

TDZE 754

136° to RW13

31

81

3401 X 60

4000 X 75

36

MRL Rwy 13-31 and 18-36

REIL Rwy 13, 31, 18 and 36