

WAAS CH <b>61024</b> <b>W36A</b>	APP CRS <b>358°</b>	Rwy Idg <b>4202</b> TDZE <b>218</b> Apt Elev <b>218</b>
--	------------------------	---

RNAV (GPS) RWY 36  
SPRINGHILL (SPH)

RNP APCH.

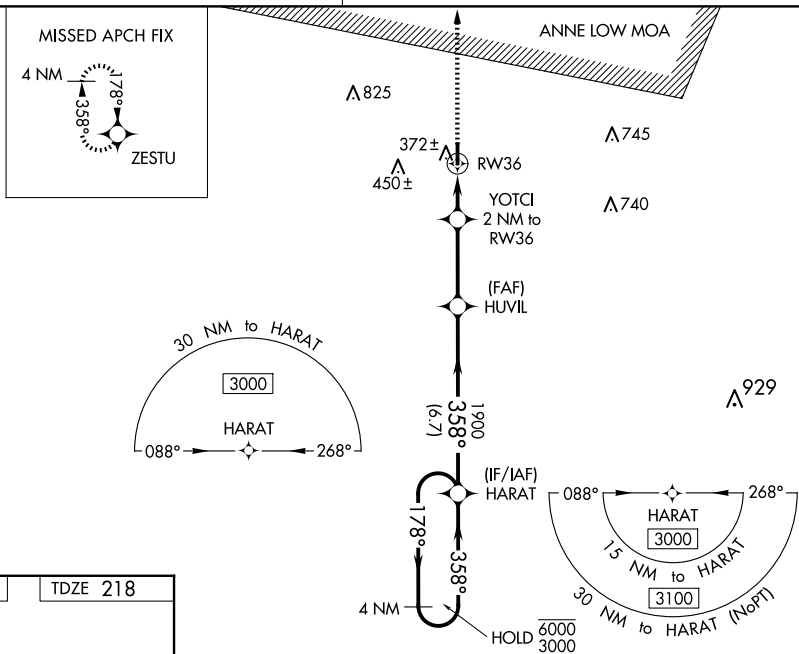


**A NA**

Rwy 36 helicopter visibility reduction below  $\frac{3}{4}$  SM NA.  
For uncompensated Baro-VNAV systems, procedure NA below -15°C or above 54°C.

**MISSED APPROACH:**  
Climb to 3000 direct  
ZESTU and hold.

SHREVEPORT APP CON  
123.75 360.725

UNICOM  
122.8 (CTAF) **L**

CATEGORY	A	B	C	D
LPV DA	545-1	327 (400-1)		NA
LNAV/VNAV	638-1 $\frac{1}{8}$	420 (500-1 $\frac{1}{2}$ )		NA
LNAV MDA	640-1	422 (500-1)	640-1 $\frac{1}{4}$ 422 (500-1 $\frac{1}{4}$ )	NA
<b>C</b> CIRCLING	700-1	482 (500-1)	820-1 $\frac{3}{4}$ 602 (700-1 $\frac{3}{4}$ )	NA