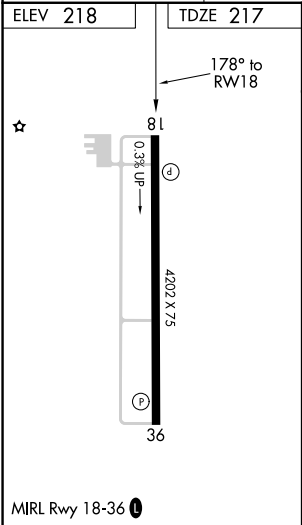
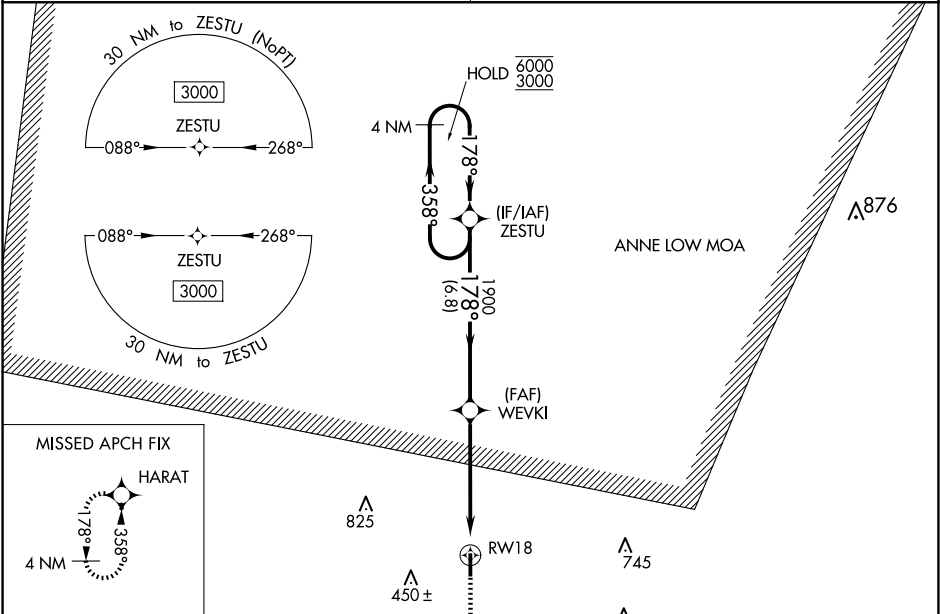


WAAS CH 86541 W18A	APP CRS 178°	Rwy Idg 4202 TDZE 217 Apt Elev 218
--	------------------------	---

RNAV (GPS) RWY 18
SPRINGHILL (SPH)

RNP APCH.	MISSED APPROACH: Climb to 3000 direct HARAT and hold.
<div><div>▼</div><div>▲ NA</div></div> Rwy 18 helicopter visibility reduction below ¾ SM NA. For uncompensated Baro-VNAV systems, procedure NA below -15°C or above 54°C.	

SHREVEPORT APP CON 123.75 360.725	UNICOM 122.8 (CTAF) 0
---	---------------------------------



4 NM Holding Pattern ZESTU				3000	HARAT
6000 ← 358° 3000 ← 178°				1900	
GP 3.00° TCH 49				*1.4 NM to RW18	*LNAV only.
				1900	
				6.8 NM	3.8 NM
				1.4 NM	
CATEGORY	A	B	C	D	
LPV DA	498-7/8	281 (300-7/8)		NA	
LNAV/VNAV DA	496-7/8	279 (300-7/8)		NA	
LNAV MDA	700-1	483 (500-1)	700-1 3/8 483 (500-1 3/8)	NA	
CIRCLING	700-1	482 (500-1)	820-1 1/2 602 (700-1 1/2)	NA	

SC-4, 10 JUL 2025 to 07 AUG 2025

SC-4, 10 JUL 2025 to 07 AUG 2025