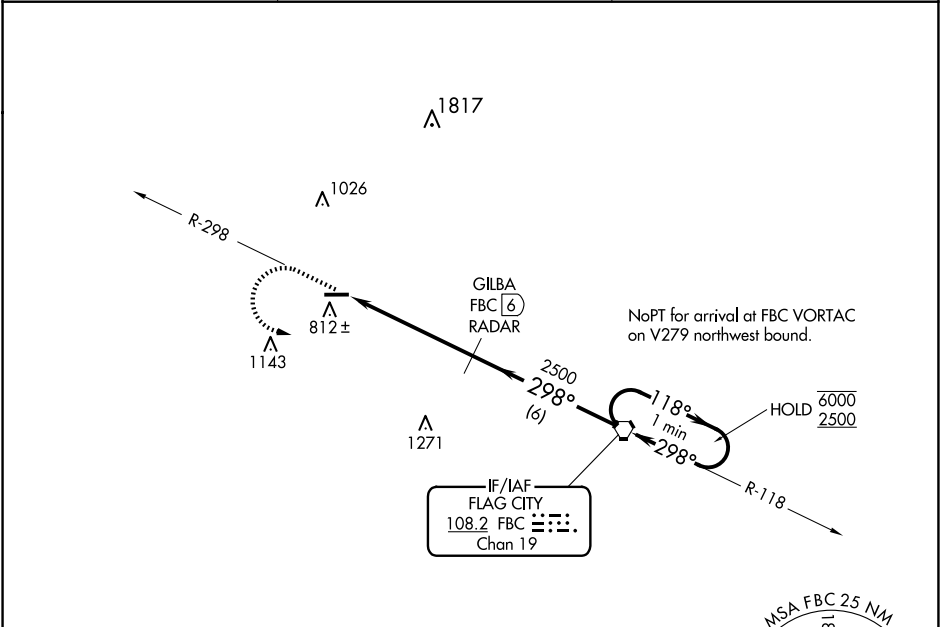


VORTAC FBC	APP CRS	Rwy Idg	4502
108.2	298°	TDZE	763
Chan 19		Apt Elev	763

VOR RWY 27
PUTNAM COUNTY (OWX)

RADAR or DME required.	MISSED APPROACH: Climb to 2500 on FBC VORTAC R-298 then left turn direct FBC VORTAC and hold.
▼ Rwy 27 helicopter visibility reduction below 1 SM NA.	
▲ NA Straight-in, Circling Rwy 27 NA at night.	

AWOS-3 120.525	TOLEDO APP COM 120.8 317.55	UNICOM 122.7 (CTAF) 0
-------------------	--------------------------------	--------------------------



ELEV 763 TDZE 763

REIL Rwys 9 and 27 0
MIRL Rwy 9-27 0

FAF to MAP 5 NM

Knots	60	90	120	150	180
Min:Sec	5:00	3:20	2:30	2:00	1:40

2500	FBC R-298	FBC (6) RADAR	FBC VORTAC	One Minute Holding Pattern
2500	298°	118° → 6000 ← 298° 2500		
5 NM	6 NM			
CATEGORY	A	B	C	D
S-27	1220-1	457 (500-1)	NA	
CIRCLING	1220-1	457 (500-1)	NA	

EC-2, 10 JUL 2025 to 07 AUG 2025

EC-2, 10 JUL 2025 to 07 AUG 2025