

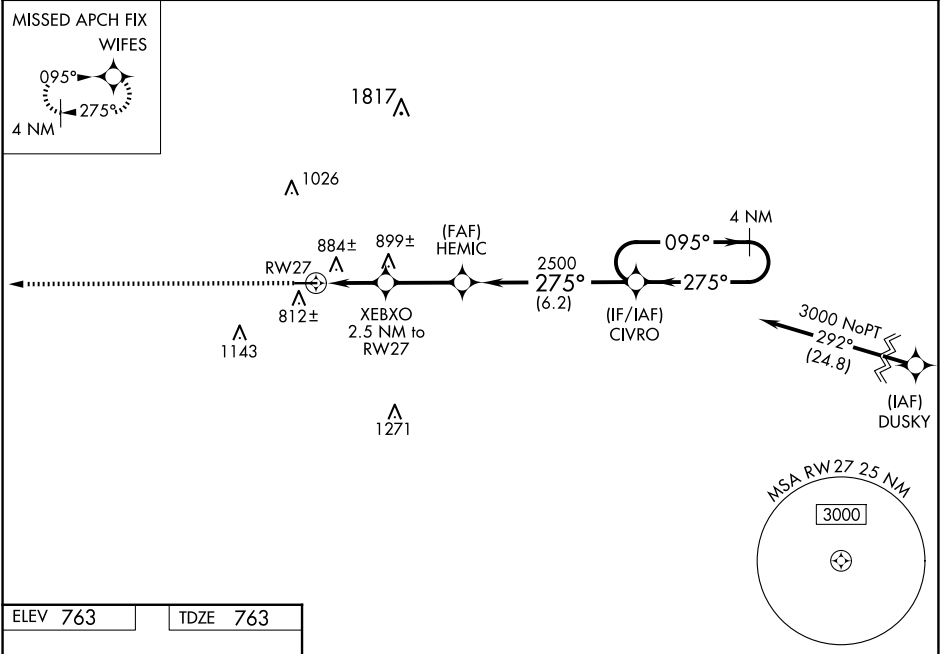
WAAS CH <b>97614</b> <b>W27A</b>	APP CRS <b>275°</b>	Rwy Idg TDZE Apt Elev	<b>4502</b> <b>763</b> <b>763</b>
--	------------------------	-----------------------------	---

RNAV (GPS) RWY 27

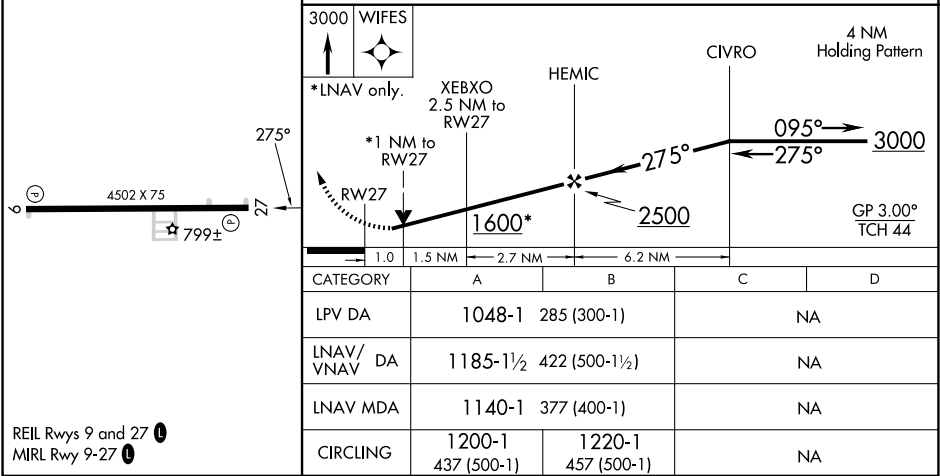
PUTNAM COUNTY (OWX)

RNP APCH. ▼ ▲ NA	For uncompensated Baro-VNAV systems, LNAV/VNAV NA below -16°C or above 54°C . Baro-VNAV and VDP NA when using Findlay alimeter setting. Rwy 27 helicopter visibility reduction below ¾ SM NA. When local alimeter setting not received, use Findlay alimeter setting and increase all DAs/MDAs 40 feet.	MISSED APPROACH: Climb to 3000 direct WIFES and hold.
------------------------	---	--

AWOS-3 <b>120.525</b>	TOLEDO APP CON <b>120.8 317.55</b>	UNICOM <b>122.7 (CTAF) 0</b>
--------------------------	---------------------------------------	---------------------------------



ELEV <b>763</b>	TDZE <b>763</b>
-----------------	-----------------



REIL Rwy 9 and 27 0  
MIRL Rwy 9-27 0