

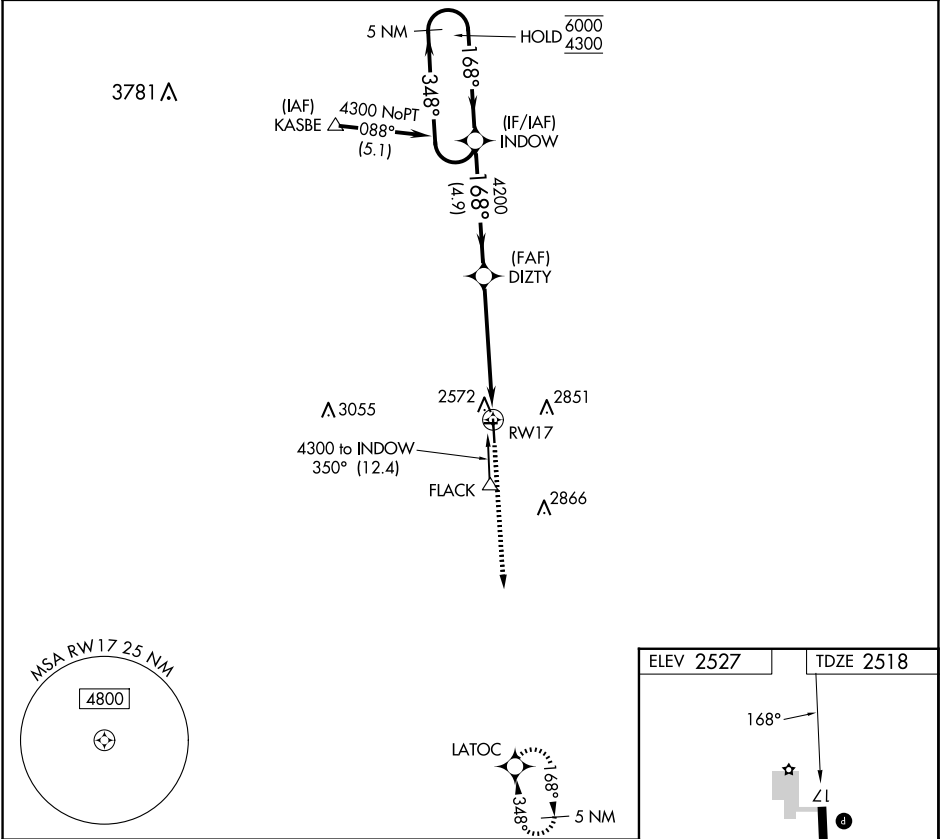
▼

NA

Circling NA to Rwys 8 and 26. Rwy 17 helicopter visibility reduction below 1 SM NA. When local altimeter setting not received, use Liberal altimeter setting and increase all MDAs 140 feet.

MISSED APPROACH: Climb to 4300 direct LATOC and hold.

AWOS-3PT 119.425	KANSAS CITY CENTER 134.0 257.625	UNICOM 122.8 (CTAF) 0
---------------------	-------------------------------------	--------------------------



5 NM Holding Pattern		Visual Segment - Obstacles.		4300	LATOC
INDOV		DIZTY		↑	✦
6000 ← 348°		168° → 4200		RW17	
4.9 NM		5.2 NM			
CATEGORY	A	B	C	D	<div><div>ELEV 2527</div><div>TDZE 2518</div></div> <div><div>168°</div><div>2085 X 85</div><div>0.8% UP</div><div>4800 X 75</div><div>0.3% UP</div><div>35</div></div> <div>REIL Rwys 17 and 35 0</div> <div>MIRL Rwy 17-35 0</div>
LNAV MDA	3100-1	582 (600-1)	NA		
CIRCLING	3100-1 573 (600-1)	3160-1 633 (700-1)	NA		