

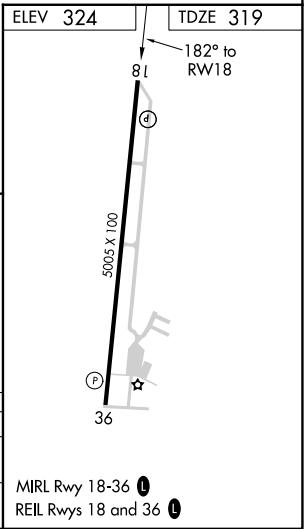
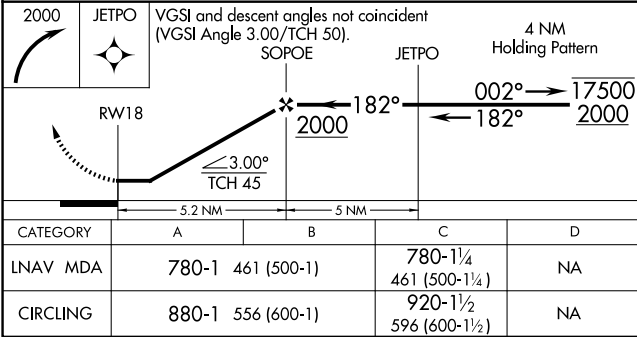
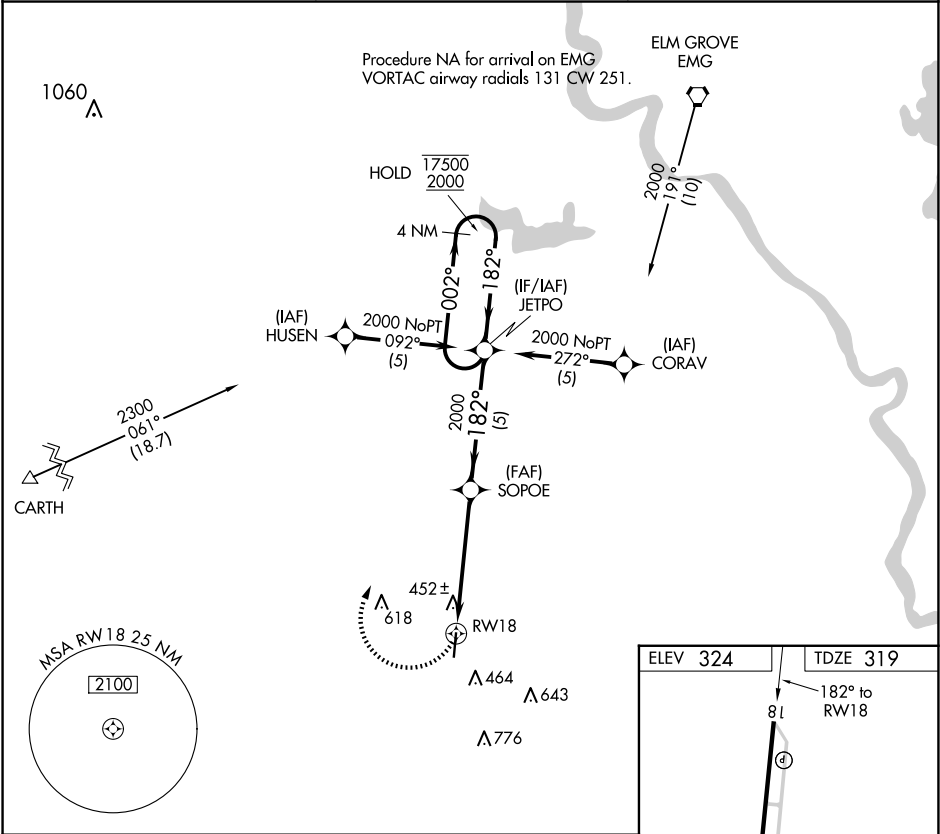
APP CRS	Rwy Idg	5005
182°	TDZE	319
	Apt Elev	324

RNAV (GPS) RWY 18

C E 'RUSTY' WILLIAMS (3F'3)

RNP APCH	MISSED APPROACH: Climbing right turn to 2000 direct JETPO and hold.
Procedure NA at night. Rwy 18 helicopter visibility reduction below 1 SM NA. When local altimeter setting not received, use Shreveport Rgnl altimeter setting: increase Circling Cat C MDA 80 feet and visibility ½ SM.	

AWOS-3PT 119.125	SHREVEPORT APP CON ★ 119.9 335.55	UNICOM 122.8 (CTAF) 0
---------------------	--------------------------------------	--------------------------



SC-4, 10 JUL 2025 to 07 AUG 2025

SC-4, 10 JUL 2025 to 07 AUG 2025