

WAAS CH 69340 W25A	APP CRS 251°	Rwy Idg 3504 TDZE 1254 Apt Elev 1255
--	------------------------	---

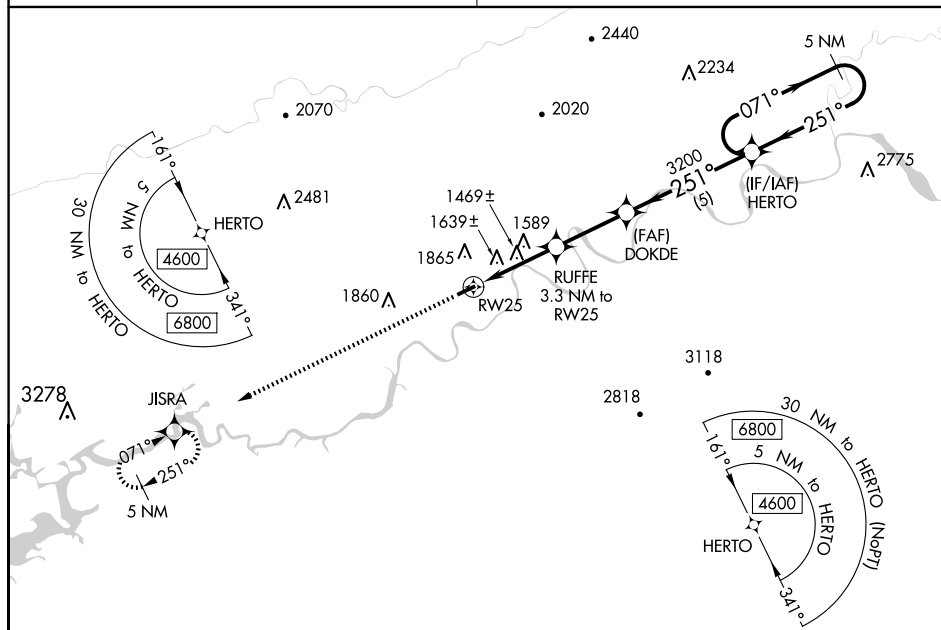
RNAV (GPS) RWY 25

HAWKINS COUNTY (RVN)

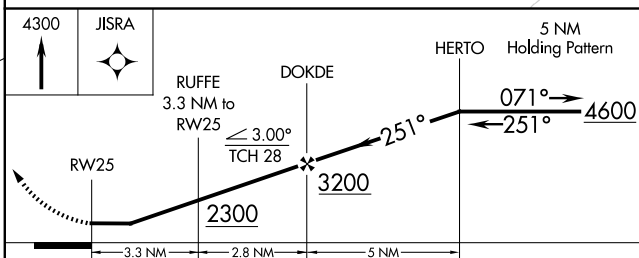
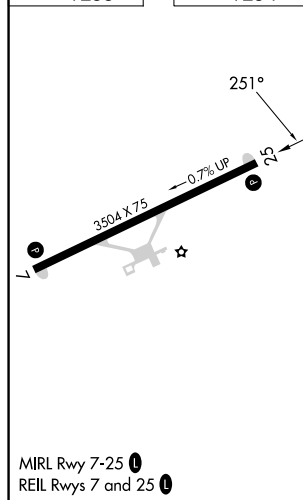
NA DME/DME RNP-0.3 NA. Procedure NA at night. Obtain local altimeter setting on CTAF; when not received, use Tri-Cities altimeter setting and increase all MDA 120 feet, increase LP Cat C visibility $\frac{3}{4}$ SM, LNAV Cat B visibility $\frac{1}{4}$ SM, Cat C visibility $\frac{3}{4}$ SM, and increase Circling Cat B visibility $\frac{1}{4}$ SM. Rwy 7, 25 helicopter visibility reduction below 1 SM NA.

MISSED APPROACH:
Climb to 4300 direct
JISRA and hold.

TRI CITY APP CON ★
128.05 317.5

UNICOM
122.8 (CTAF) **L**

ELEV 1255		TDZE 1254
-----------	--	-----------



CATEGORY	A	B	C	D
LP MDA	1720-1	466 (500-1)	1720-1 $\frac{1}{8}$ 466 (500-1 $\frac{1}{8}$)	NA
LNAV MDA	1900-1	646 (700-1)	1900-1 $\frac{1}{8}$ 646 (700-1 $\frac{1}{8}$)	NA
CIRCLING	2180-1 $\frac{1}{4}$	925 (1000-1 $\frac{1}{4}$)	2320-3 1065 (1100-3)	NA