

WAAS CH 82329 W04A	APP CRS 045°	Rwy Idg TDZE Apt Elev	5010 578 578
--	------------------------	-----------------------------	---

RNAV (GPS) RWY 4

FAIRFIELD COUNTY (FDW)

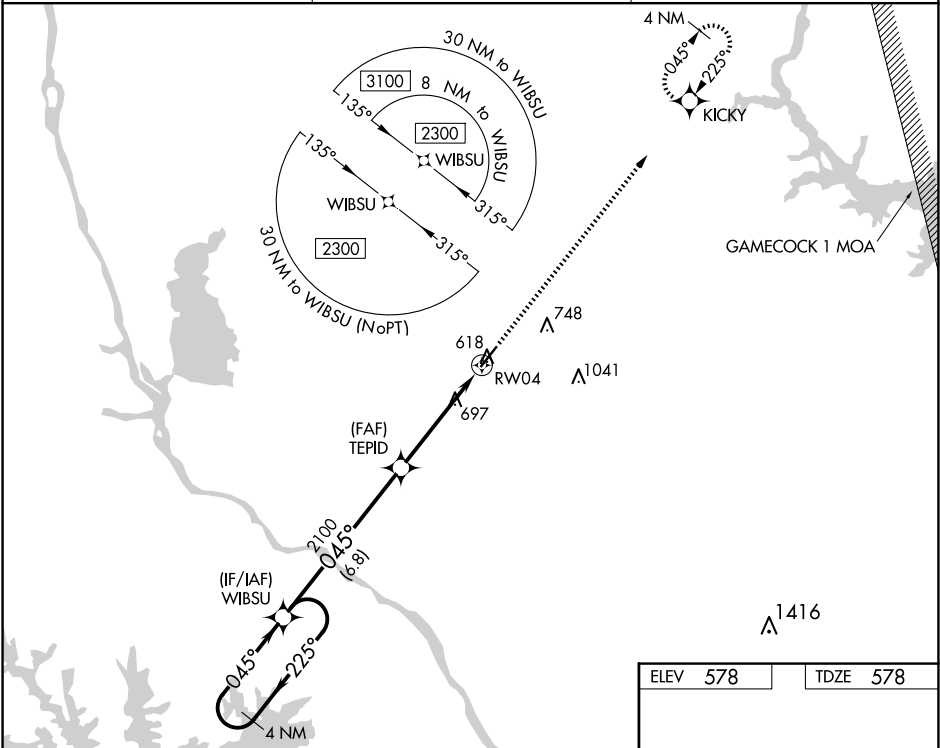
▼

▲

For uncompensated Baro-VNAV systems, LNAV/VNAV NA below -16°C (4°F) or above 54°C (130°F). DME/DME RNP-0.3 NA.

MISSED APPROACH: Climb to 2300 direct KICKY and hold.

AWOS-3 119.075	COLUMBIA APP CON 133.4 285.6	UNICOM 123.05 (CTAF) 0
--------------------------	--	----------------------------------



4 NM Holding Pattern		VGSI and RNAV glidepath not coincident (VGSI Angle 3.00/TCH 32).			2300 KICKY
2300 ←225° 045°→		WBSU			↑
GP 3.00° TCH 40		TEPID 2100			✧
		*1.1 NM to RW04			*LNAV only.
		RW04			
		6.8 NM			
		3.6 NM			
		1.1			
CATEGORY	A	B	C	D	
LPV DA	828-7/8		250 (300-7/8)		
LNAV/VNAV DA	828-7/8		250 (300-7/8)		
LNAV MDA	960-1 382 (400-1)		960-1 382 (400-1 1/8)		
CIRCLING	980-1 402 (500-1)	1040-1 462 (500-1)	1080-1 502 (600-1 1/2)	1360-2 782 (800-2 1/2)	

