

WAAS CH <b>97330</b> <b>W22A</b>	APP CRS <b>225°</b>	Rwy Idg TDZE Apt Elev	<b>5243</b> <b>574</b> <b>578</b>
--	------------------------	-----------------------------	---

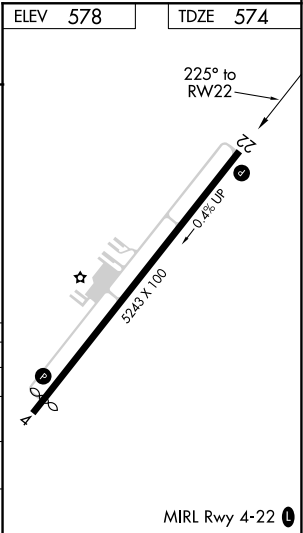
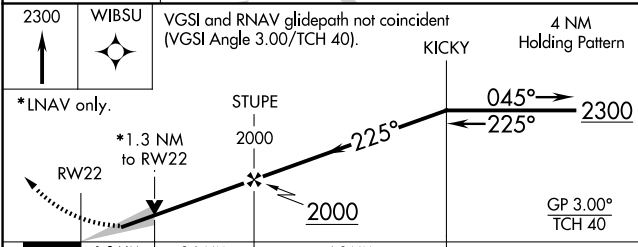
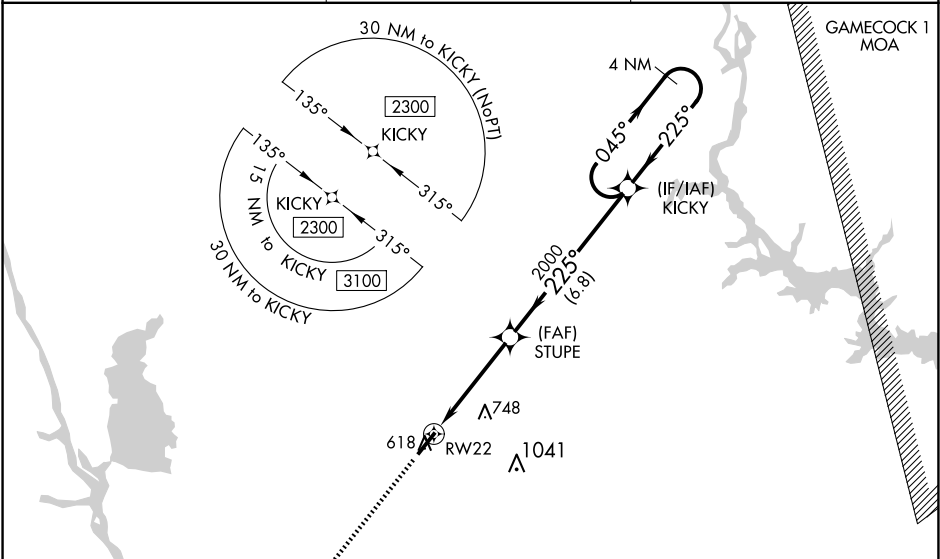
RNAV (GPS) RWY 22

FAIRFIELD COUNTY (FDW)

- ▼

For uncompensated Baro-VNAV systems, LNAV/VNAV NA below -16°C (4°F) or above 54°C (130°F). DME/DME RNP-0.3 NA.
- MISSED APPROACH: Climb to 2300 direct WBSU and hold.

AWOS-3 <b>119.075</b>	COLUMBIA APP CON <b>133.4 285.6</b>	UNICOM <b>123.05 (CTAF) 0</b>
--------------------------	--	----------------------------------



CATEGORY	A	B	C	D
LPV DA	824-7/8	250 (300-7/8)		
LNAV/VNAV DA	824-7/8	250 (300-7/8)		
LNAV MDA	1000-1	426 (500-1)	1000-1¼	426 (500-1¼)
CIRCLING	1000-1 422 (500-1)	1040-1 462 (500-1)	1080-1½ 502 (600-1½)	1360-2½ 782 (800-2½)