

NC-3, 10 JUL 2025 to 07 AUG 2025

WAAS CH 69633 W15A	APP CRS 155°	Rwy Idg TDZE 769 Apt Elev 769	3304
--	------------------------	---	-------------

RNAV (GPS) RWY 15

MAQUOKETA MUNI (OQW)

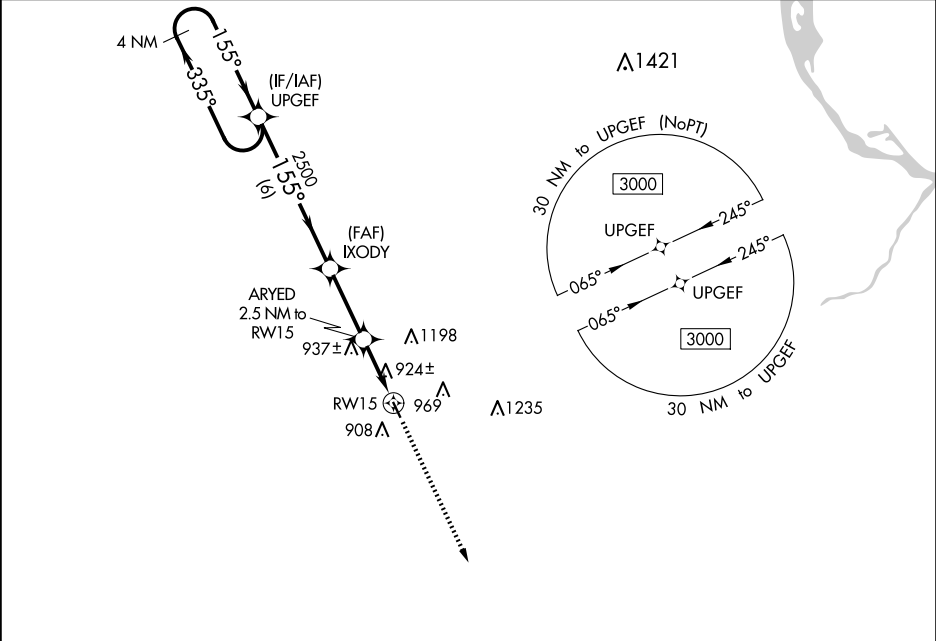
▼

⚠ NA

DME/DME RNP-0.3 NA. Helicopter visibility reduction below 1 SM NA.
Night landing: Rwy 15 NA. Obtain local altimeter on CTAF; when not received, use Dubuque altimeter setting and increase all MDA 100 feet.

MISSED APPROACH: Climb to 3000 direct NAZVI and hold.

CHICAGO CENTER 133.95 281.4	UNICOM 122.725 (CTAF) 0
---------------------------------------	-----------------------------------



ELEV 769

TDZE 769

155°

335°

4 NM

3000

2500

1600

4 NM Holding Pattern

Visual Segment - Obstacles.

3000

NAZVI

6 NM

2.8 NM

2.5 NM

CATEGORY

A

B

C

D

LP MDA

1180-1

411 (500-1)

NA

LNAV MDA

1200-1

431 (500-1)

NA

CIRCLING

1240-1

471 (500-1)

1400-1

631 (700-1)

NA

REIL Rwys 15 and 33 0

MIRL Rwy 15-33 0

NC-3, 10 JUL 2025 to 07 AUG 2025