

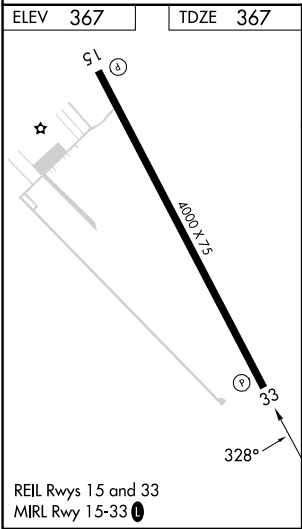
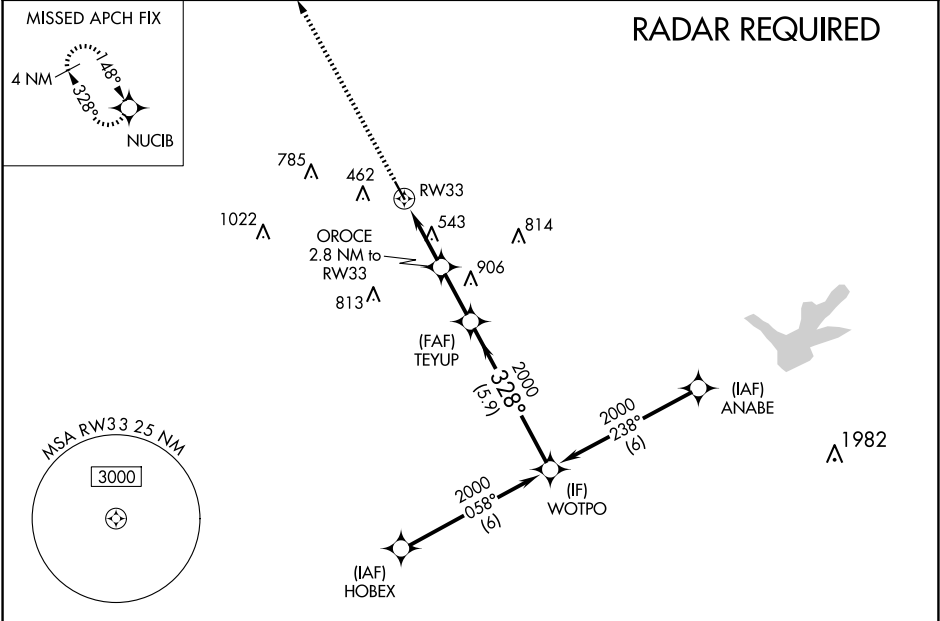
WAAS CH 70603 W33A	APP CRS 328°	Rwy Idg TDZE Apt Elev	4000 367 367
--	------------------------	-----------------------------	---

RNAV (GPS) RWY 33

COULTER FLD (CFD)

RNP APCH.	MISSED APPROACH: Climb to 2500 direct NUCIB and hold.
NA	Baro-VNAV NA. Use College Station altimeter setting; when not received, use Caldwell altimeter setting and increase all DA 31 feet and all MDA 40 feet.

AWOS-3PT 125.975	CLL ASOS 126.85	HOUSTON APP CON 134.3 360.85	UNICOM 123.0 (CTAF) 0
----------------------------	---------------------------	--	---------------------------------



2500	NUCIB	VGSI and RNAV glidepath not coincident (VGSI Angle 3.50/TCH 40).			
*LNAV only.		OROCE 2.8 NM to RW33	TEYUP 2000	WOTPO	
		2000	2000	GP 3.00° TCH 40	
2.8 NM		2.2 NM	5.9 NM		
CATEGORY	A	B	C	D	
LPV DA	642-1	275 (300-1)	NA		
LNAV/ VNAV	642-1	275 (300-1)	NA		
LNAV MDA	880-1	513 (600-1)	NA		

SC-5, 10 JUL 2025 to 07 AUG 2025

SC-5, 10 JUL 2025 to 07 AUG 2025