

WAAS CH <b>40333</b> <b>W13A</b>	APP CRS <b>135°</b>	Rwy Idg TDZE <b>820</b> Apt Elev <b>820</b>
--	------------------------	---

RNAV (GPS) RWY 13

HALLOCK MUNI (HCO)

RNP APCH-GPS.

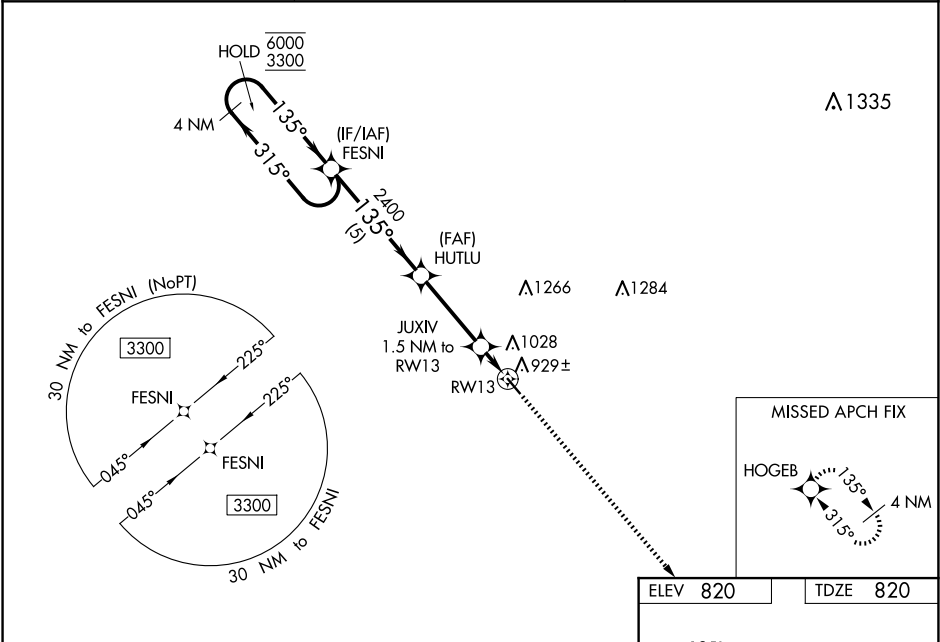
▼

⚠

Baro-VNAV NA when using Grafton altimeter setting. For uncompensated Baro-VNAV systems, LNAV/VNAV NA below -16°C or above 54°C. When local altimeter setting not received, use Grafton altimeter setting and increase LPV DA to 1082 feet; increase LNAV/VNAV DA to 1161 feet; increase all MDAs 80 feet and LNAV visibility Cat C ¼ SM, and Circling visibility Cat C ¼ SM.

MISSED APPROACH: Climb to 2800 direct HOGEB and hold.

AWOS-3 <b>126.475</b>	MINNEAPOLIS CENTER <b>132.15 269.6</b>	UNICOM <b>122.8</b> (CTAF) <b>0</b>
--------------------------	---	--



4 NM Holding Pattern

FESNI

HUTLU

JUXIV 1.5 NM to RW13

RW13

2800 HOGEB

GP 3.00° TCH 45

5 NM 3.3 NM 1.5 NM

CATEGORY	A	B	C	D
LPV DA	1020-1	200 (200-1)		NA
LNAV/VNAV DA	1099-1	279 (300-1)		NA
LNAV MDA	1180-1	360 (400-1)		NA
<b>C</b> CIRCLING	1380-1	560 (600-1)	1380-1½ 560 (600-1½)	NA

REIL Rwy 13 and 31 **0**

MIRL Rwy 13-31 **0**