

WAAS

CH **56524**

**W04A**

APP CRS

**040°**

Rwy Idg

**4401**

TDZE

**34**

Apt Elev

**35**

**RNAV (GPS) RWY 4**

CONWAY-HORRY COUNTY (HYW)

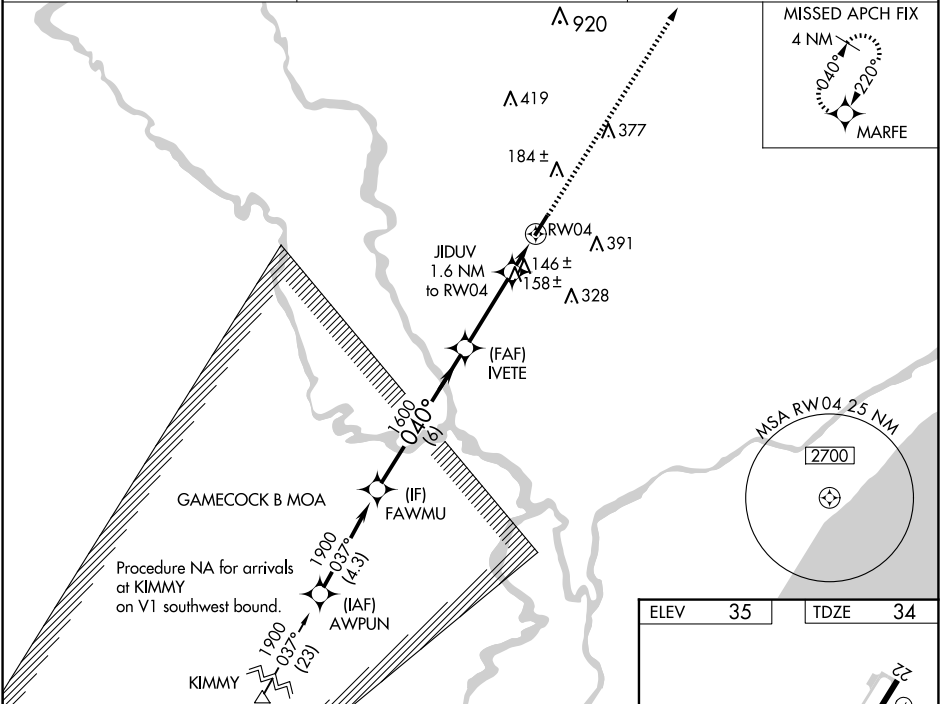
RNP APCH.

⚠

When Circling to Rwy 22 at night, operational VGSI required, remain on or above VGSI glidepath until threshold. Rwy 4 helicopter visibility reduction below ¾ SM NA.  
For uncompensated Baro-VNAV systems, LNAV/VNAV NA below -15°C or above 54°C.

MISSED APPROACH: Climb to 1900 direct MARFE and hold.

AWOS-3 <b>119.525</b>	MYRTLE BEACH APP CON★ <b>127.4 257.95</b>	UNICOM <b>122.7 (CTAF) 0</b>
--------------------------	--	---------------------------------



VGSI and RNAV glidepath not coincident (VGSI Angle 3.35/TCH 48).

1900

MARFE

\*LNAV only.

FAWMU

IVETE

JIDUV 1.6 NM to RW04

RW04

GP 3.00° TCH 40

1900

1600

\*580

6 NM

3.2 NM

0.5 NM

1.1 NM

CATEGORY	A	B	C	D
LPV DA	315-7⁄8	281 (300-7⁄8)		
LNAV/DA VNAV	525-13⁄8	491 (500-13⁄8)		
LNAV MDA	460-1	426 (500-1)	460-1¼	426 (500-1¼)
Ⓢ CIRCLING	520-1 485 (500-1)	540-1 505 (600-1)	700-1¾ 665 (700-1¾)	700-2 665 (700-2)

REIL Rwy 4 and 22

MIRL Rwy 4-22 0