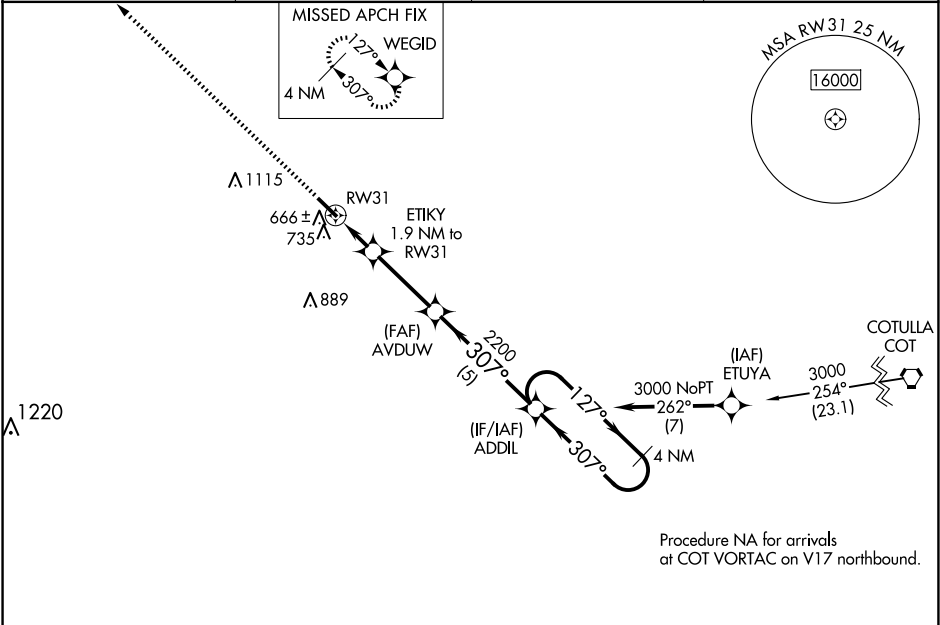


WAAS CH 50433 W31A	APP CRS 307°	Rwy Idg TDZE 589 Apt Elev 598	5003
--	------------------------	---	-------------

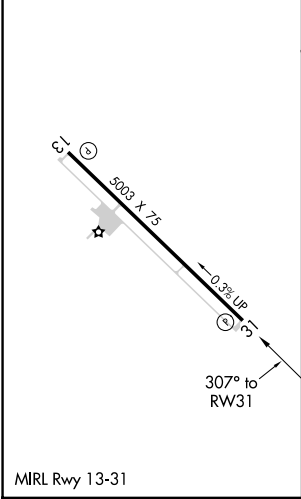
RNAV (GPS) RWY 31
DIMMIT COUNTY (CZT)

<p>▼ ▲ NA</p> <p>Baro-VNAV NA. DME/DME RNP-0.3 NA. Use Cotulla altimeter setting; when not received use Uvalde altimeter setting and increase all DA 52 feet, all MDA 60 feet and increase LPV all Cnts, LNAV/VNAV all Cnts, and Circling Cat C visibility ¼ mile. Helicopter visibility reduction below ¾ SM NA.</p>	<p>MISSED APPROACH: Climb to 3000 direct WEGID and hold.</p>
---	--

AWOS-3 119.625	COT ASOS 118.325	HOUSTON CENTER 127.8 307.2	UNICOM 122.8 (CTAF)
--------------------------	----------------------------	--------------------------------------	-------------------------------



ELEV 598	TDZE 589
-----------------	-----------------



3000 ↑	WEGID 				
-----------	-----------	--	--	--	--