

BRENHAM, TEXAS

AL-6271 (FAA)

19311

| | | |
|--|------------------------|---|
| WAAS CH 77616 W34A | APP CRS 345° | Rwy Idg 6003 TDZE 269 Apt Elev 318 |
|--|------------------------|---|

RNAV (GPS) RWY 34
BRENHAM MUNI (11R)


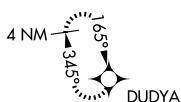
RNP APCH.

T For uncompensated Baro-VNAV systems, LNAV/VNAV NA below -15°C or above 37°C. Rwy 34 helicopter visibility reduction below $\frac{3}{4}$ SM NA. When local altimeter setting not received, use College Station altimeter setting and increase all DA 52 feet, and all MDA 60 feet; increase LPV and LNAV/VNAV all Cats visibility $\frac{1}{4}$ SM. VDP and Baro-VNAV NA with College Station altimeter setting.

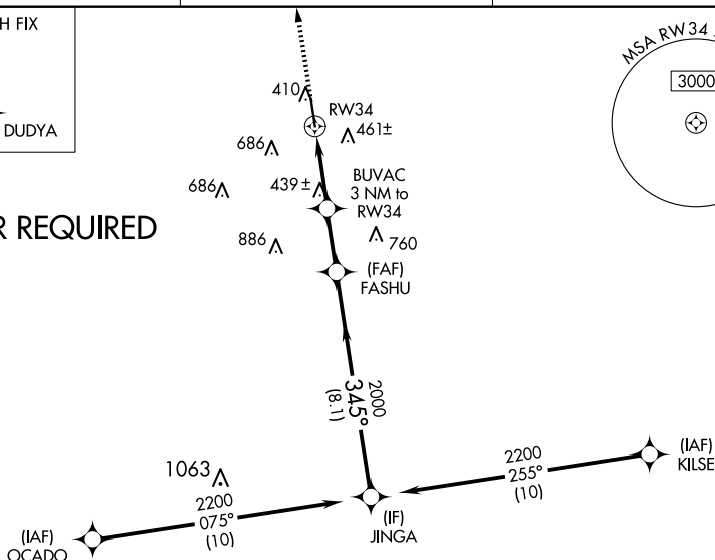
MISSED APPROACH: Climb to 3100 direct DUDYA and hold.

| | | |
|--------------------------|--|-----------------------------------|
| AWOS-3 121.125 | HOUSTON APP CON 134.3 360.85 | UNICOM 123.075 (CTAF) 0 |
|--------------------------|--|-----------------------------------|

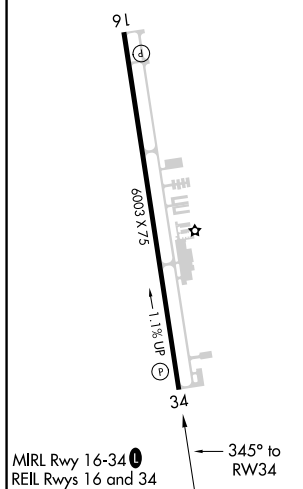
MISSED APCH FIX



RADAR REQUIRED



| | | |
|----------|--|----------|
| ELEV 318 | | TDZE 269 |
|----------|--|----------|



3100 DUDYA VGS1 and RNAV glidepath not coincident (VGS1 Angle 3.50/TCH 48).

* LNAV only.

1.1 NM 1.9 2.3 NM 8.1 NM

RW34

BUVAC 3 NM to RW34

FASHU 2000

JINGA 2200

345°

GP 3.00° TCH 45

| CATEGORY | DA | A | B | C | D |
|-----------|----|-------|---------------------|----------------------------|----------------------------|
| LPV | DA | | 519- $\frac{3}{4}$ | 250 (200- $\frac{3}{4}$) | |
| LNAV/VNAV | DA | | 718-1 $\frac{1}{2}$ | 449 (400-1 $\frac{1}{2}$) | |
| LNAV MDA | | 700-1 | 431 (400-1) | 700-1 $\frac{3}{8}$ | 431 (400-1 $\frac{3}{8}$) |

BRENNHAM, TEXAS
Amdt 2B 07NOV19

30°13'N-96°22'W

BRENNHAM MUNI (11R)
RNAV (GPS) RWY 34

SC-5, 10 JUL 2025 to 07 AUG 2025

SC-5, 10 JUL 2025 to 07 AUG 2025