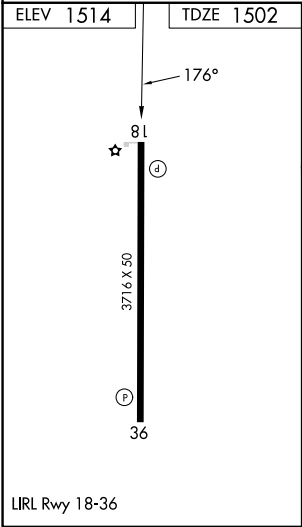
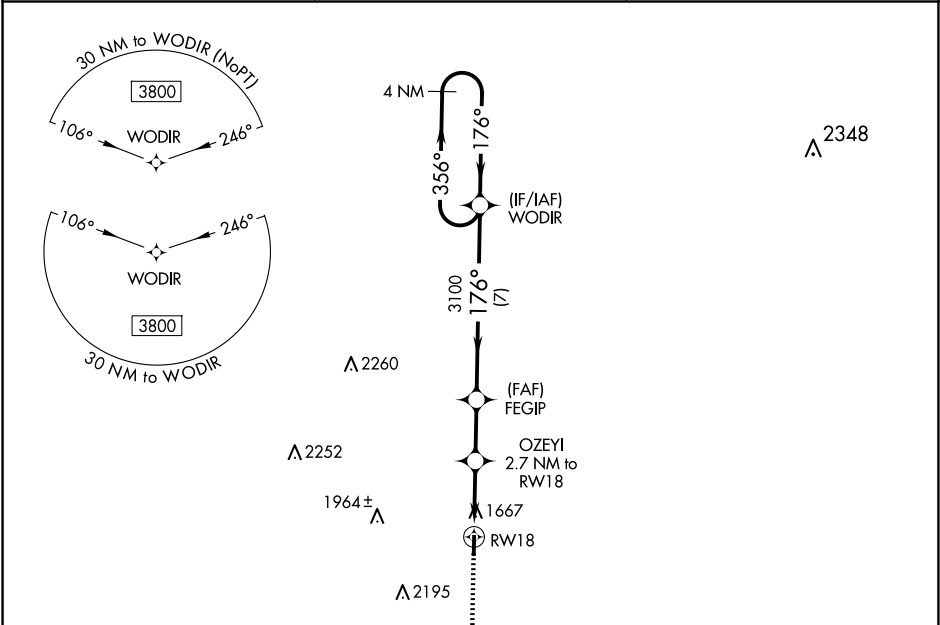


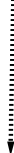
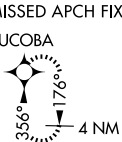



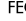


APP CRS	Rwy Idg	3716
176°	TDZE	1502
	Apt Elev	1514

RNAV (GPS) RWY 18  
MASON COUNTY (T92)

<div>▼</div> <div>▲ NA</div>	Rwy 18/36 helicopter visibility reduction below 1 SM NA. DME/DME RNP-0.3 NA. Procedure NA at night. Use Brady altimeter setting; when not received, use Llano altimeter setting and increase all MDAs 20 feet.	MISSED APPROACH: Climb to 3800 direct UCOBA and hold.
------------------------------	--	---

BBD AWOS-3 118.375	HOUSTON CENTER 132.35 317.5	CTAF 122.9
-----------------------	--------------------------------	---------------



		<div>MISSED APCH FIX</div> <div>UCOBA</div> 		
3800	UCOBA	Visual Segment - Obstacles.	4 NM Holding Pattern	
				
				
RW18		FEGIP	WODIR	
OZEY1 2.7 NM to RW18		3100	3800	
2380		176°	356°	
2.7 NM		2.2 NM	7 NM	
CATEGORY	A	B	C	D
LNAV MDA	2080-1	578 (600-1)	NA	
 CIRCLING	2140-1	626 (700-1)	NA	

SC-3, 10 JUL 2025 to 07 AUG 2025

SC-3, 10 JUL 2025 to 07 AUG 2025