

APP CRS
097°

Rwy Idg
TDZE
Apt Elev

3795
881
895

RNAV (GPS) RWY 10

MARLETTE TOWNSHIP (77G)

RNP APCH - GPS.

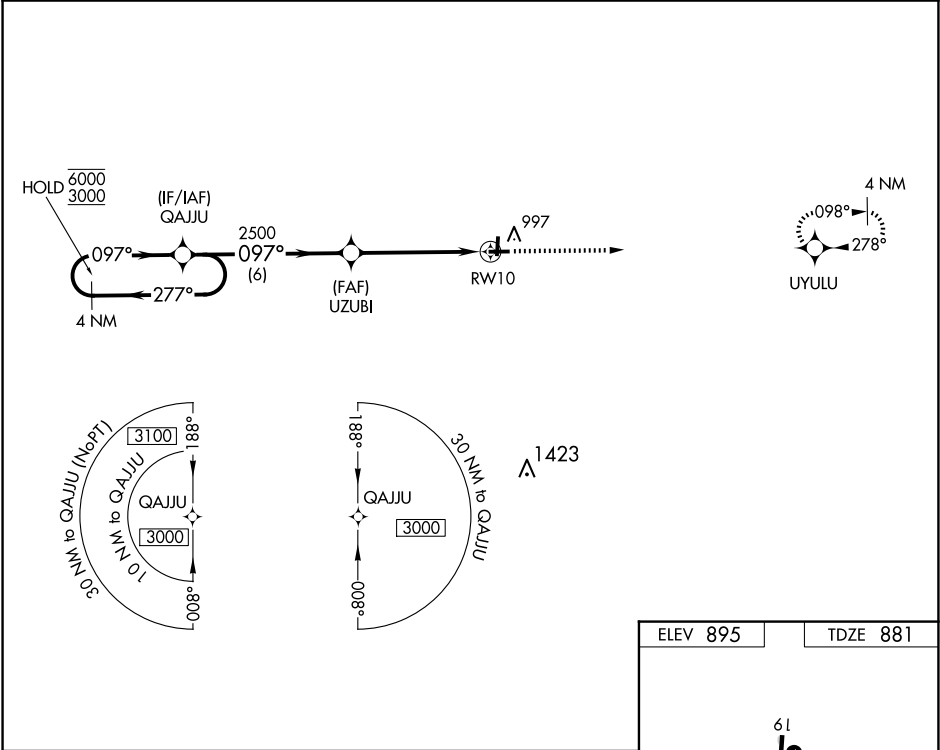
▼

NA

Rwy 10 helicopter visibility reduction below 1 SM NA. Straight-in Rwy 10 NA at night, Circling Rwy 10,19 NA at night. Use Caro altimeter setting, when not received, use Bad Axe altimeter setting and increase all MDAs 20 feet and LNAV visibility Cat C/D ½ SM.

MISSED APPROACH:
Climb to 2700 direct UYULU and hold.

CFS AWOS-3 119.275	CLEVELAND CENTER 127.7 290.425	UNICOM 122.8 (CTAF) 0
------------------------------	--	---------------------------------



4 NM Holding Pattern

VGSI and RNAV glidepath not coincident (VGSI Angle 3.00/TCH 44).

2700 UYULU

QAJJU

UZUBI

RWY 10

6000 3000

277° 097°

2500

3.00° TCH 40

6 NM 5 NM

CATEGORY	A	B	C	D
LNAV MDA	1420-1	539 (600-1)	1420-1½	539 (600-1½)
CIRCLING	1460-1	565 (600-1)	1460-1½	1560-2

61

3500 X 75

0.7% UP

3795 X 75

28

097° to RWY 10

MIRL Rwy 1-19 and 10-28 0