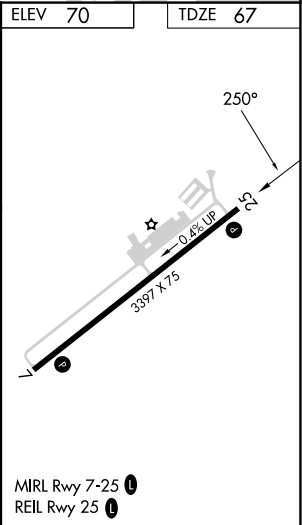
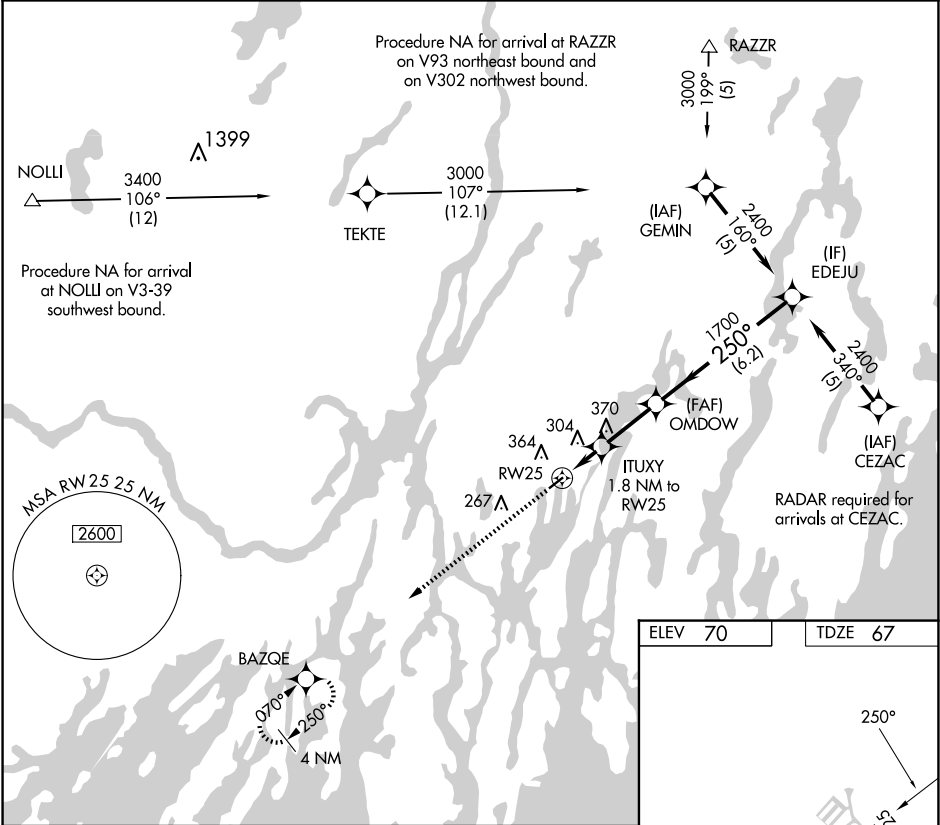


APP CRS	Rwy Idg	3397
250°	TDZE	70
	Apt Elev	70

RNAV (GPS) RWY 25
WISCASSET (IWI)

RNP APCH.	Procedure NA at night. Rwy 25 helicopter visibility reduction below 1 SM NA. When local altimeter setting not received use Rockland altimeter setting and increase all MDA 80 feet.	MISSED APPROACH: Climb to 3000 direct BAZQE and hold.
-----------	---	---

ASOS 135.725	PORTLAND APP CON★ 119.75 269.35 (112°-292°) 120.4 299.2 (293°-111°)	UNICOM 122.8 (CTAF) 0
-----------------	---	--------------------------



3000	BAZQE	EDEJU
↑	✧	
ITUXY 1.8 NM to RW25	OMDOW	2400
RW25	760	Procedure Turn NA
1.8 NM	2.5 NM	6.2 NM
CATEGORY	A	B
LNNAV MDA	580-1	513 (600-1)
		NA

NE-1, 10 JUL 2025 to 07 AUG 2025

NE-1, 10 JUL 2025 to 07 AUG 2025