

WAAS CH 82199 W23A	APP CRS 233°	Rwy Idg TDZE Apt Elev	6007 700 700
--	------------------------	-----------------------------	---

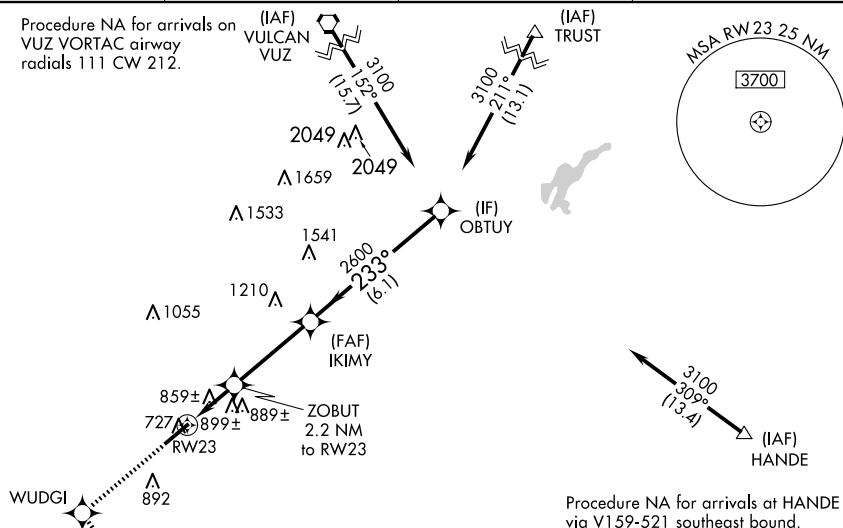
RNAV (GPS) RWY 23
BESSEMER(EKY)

T For uncompensated Baro-VNAV systems, LNAV/VNAV NA below -16°C (4°F) or above 54°C (130°F). DME/DME RNP-0.3 NA. Helicopter visibility reduction below 3/4 SM NA. **A** NA When local altimeter setting not received, use Alabaster altimeter setting and increase LPV DA to 1013 feet, LNAV/VNAV DA to 1211 feet, and all MDAs 60 feet; increase Circling Cat D visibility 1/4 SM. Baro-VNAV and VDP NA when using Alabaster altimeter setting.

MISSED APPROACH: Climb to 4000 direct WUDGI and on track 148° to TASYU and hold, continue climb-in-hold to 4000.

AWOS-3PT 118.825	BIRMINGHAM APP CON 124.9 351.85	CLNC DEL 123.75	UNICOM 123.0 (CTAF) L
----------------------------	---	---------------------------	---------------------------------

Procedure NA for arrivals on
VUZ VORTAC airway
radials 111 CW 212.



Procedure NA for arrivals at HANDE
via V159-521 southeast bound.

[illegible]

BESSEMER(EKY)
RNAV (GPS) RWY 23