

LOC/DME I-EKY  
**111.75**  
Chan **54** (Y)

APP CRS  
**053°**

Rwy Idg  
TDZE **700**  
Apt Elev **700**

ILS or LOC RWY 5  
BESSEMER (EKY)

NA

When local altimeter setting not received, use Alabaster altimeter setting and increase DA 41 feet, increase all MDAs 60 feet; increase S-LOC 5 Cat C visibility  $\frac{1}{8}$  SM and Cat D visibility  $\frac{1}{4}$  SM, increase Circling Cat C visibility  $\frac{1}{8}$  SM Cat D visibility  $\frac{1}{4}$  SM, increase JURAM fix S-LOC 5 Cat C visibility  $\frac{1}{8}$  SM and Cat D visibility  $\frac{1}{4}$  SM; increase Circling Cat D visibility  $\frac{1}{4}$  SM. VDP NA with Alabaster altimeter setting.

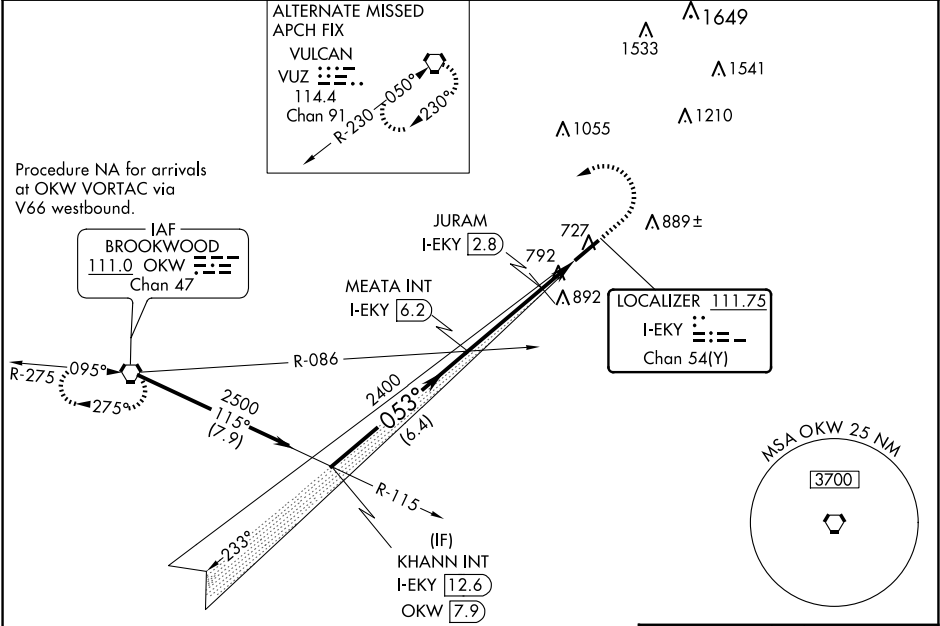
MISSED APPROACH: Climb to 1200 then climbing left turn to 3000 direct OKW VORTAC and hold.

AWOS-3PT  
**118.825**

BIRMINGHAM APP CON  
**124.9 351.85**

CLNC DEL  
**123.75**

UNICOM  
**123.0** (CTAF) **0**



Procedure Turn NA

KHANN INT  
I-EKY **12.6**

# 1260 when using  
Alabaster altimeter setting.

MEATA INT  
I-EKY **6.2**

JURAM  
I-EKY **2.8**

\* I-EKY **2.2**

I-EKY **1.2**

\* LOC only

GS 3.00°  
TCH 60

2500  
053°

2400

2400

# \* 1200

1200

3000

OKW

ELEV 700

TDZE 700

053° 5.1 NM  
from FAF

HIRL Rwy 5-23 **0**  
REIL Rwy 5 and 23 **0**

FAF to MAP 5.1 NM

CATEGORY	A	B	C	D
S-ILS 5	900- $\frac{3}{4}$ 200 (200- $\frac{3}{4}$ )			
S-LOC 5	1200-1	500 (500-1)	1200- $1\frac{3}{8}$ 500 (500- $1\frac{1}{8}$ )	1200- $1\frac{1}{2}$ 500 (500- $1\frac{1}{2}$ )
CIRCLING	1200-1	500 (500-1)	1220- $1\frac{1}{2}$ 520 (600- $1\frac{1}{2}$ )	1320-2 620 (700-2)
JURAM FIX MINIMUMS				
S-LOC 5	1100-1	400 (400-1)	1100- $1\frac{1}{8}$ 400 (400- $1\frac{1}{8}$ )	1100- $1\frac{1}{4}$ 400 (400- $1\frac{1}{4}$ )
CIRCLING	1200-1	500 (500-1)	1220- $1\frac{1}{2}$ 520 (600- $1\frac{1}{2}$ )	1320-2 620 (700-2)

Knots	60	90	120	150	180
Min:Sec	5:06	3:24	2:33	2:02	1:42