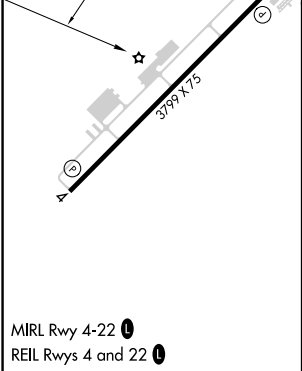
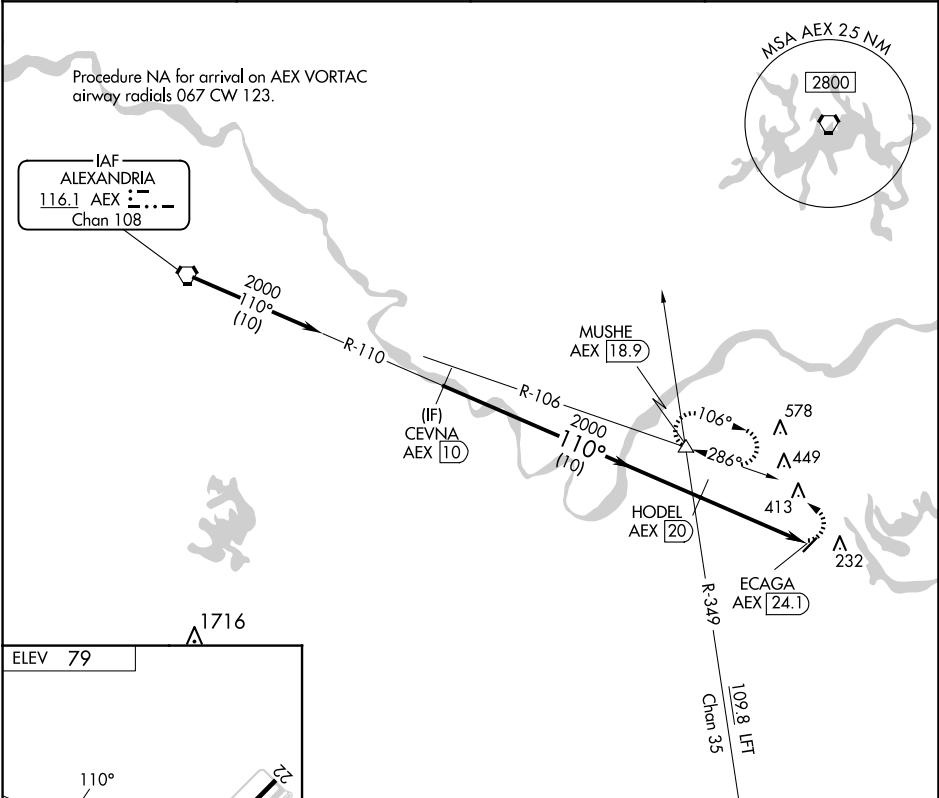


VORTAC AEX 116.1 Chan 108	APP CRS 110°	Rwy Ldg TDZE Apt Elev 79	N/A N/A
---	------------------------	--	------------

VOR-A
MARKSVILLE MUNI (MKV)

DME required.	MISSED APPROACH: Climbing left turn to 4000 on AEX VORTAC R-106 to MUSHE INT/AEX 18.9 DME and hold, continue climb-in-hold to 4000.
NA Circling Rwy 22 NA at night. Use Esler Rgnl altimeter setting. When not received, use Alexandria Intl altimeter setting.	

AWOS-3PT 124.175	ESF ASOS 119.425	POLK APP CON 125.4 302.2	CTAF 122.9 0
----------------------------	----------------------------	------------------------------------	------------------------



CEVNA AEX 10		HODEL AEX 20		ECAGA AEX 24.1	
2000		2000		4000	
110°		110°		MUSHE AEX 18.9	
10 NM		4.1 NM		R-106	
CATEGORY	A	B	C	D	
760-1	820-1 1/4	NA			
681 (700-1)	741 (800-1 1/4)				
CIRCLING					

SC-4, 10 JUL 2025 to 07 AUG 2025

SC-4, 10 JUL 2025 to 07 AUG 2025