

WAAS CH <b>78428</b> <b>W08A</b>	APP CRS <b>080°</b>	Rwy Idg TDZE Apt Elev	<b>4601</b> <b>831</b> <b>836</b>
--	------------------------	-----------------------------	---

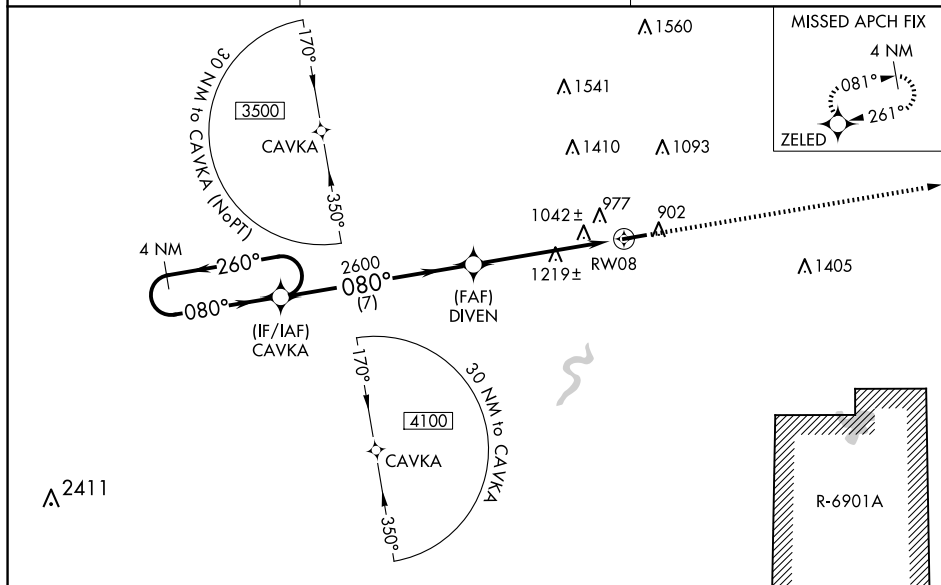
# RNAV (GPS) RWY 8

## BLACK RIVER FALLS AREA (BCK)

**V** Baro-VNAV NA when using La Crosse altimeter setting. For uncompensated Baro-VNAV systems, LNAV/VNAV NA below -16°C (4°F) or above 38°C (100°F), DME/DME RNP-0.3 NA. Visibility reduction by helicopters NA. VDP NA with the La Crosse altimeter setting. When local altimeter setting not received, use La Crosse altimeter setting: increase LPV DA to 1172 feet and visibility all Cats ½ SM; increase LNAV/VNAV DA to 1441 feet and visibility all Cats ½ SM; increase all MDA 100 feet and visibility LNAV Cat B ½ SM, Cat C and D ½ SM and Circling Cat C ½ SM.

**MISSED APPROACH:**  
Climb to 3500 direct  
ZELED and hold.

AWOS-3PT	MINNEAPOLIS CENTER	CTAF
119.125	128.6 363.0	122.9 0



EC-3, 10 JUL 2025 to 07 AUG 2025

[illegible]

BLACK RIVER FALLS, WISCONSIN  
Amdt 1B 21APR22

44°15'N-90°51'W

BLACK RIVER FALLS AREA (BCK)  
RNAV (GPS) RWY 8