

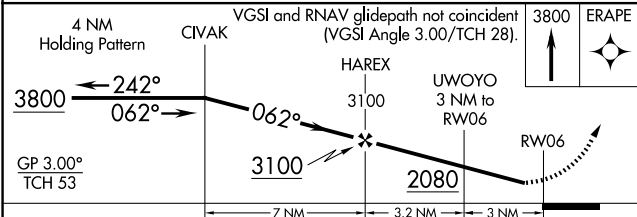
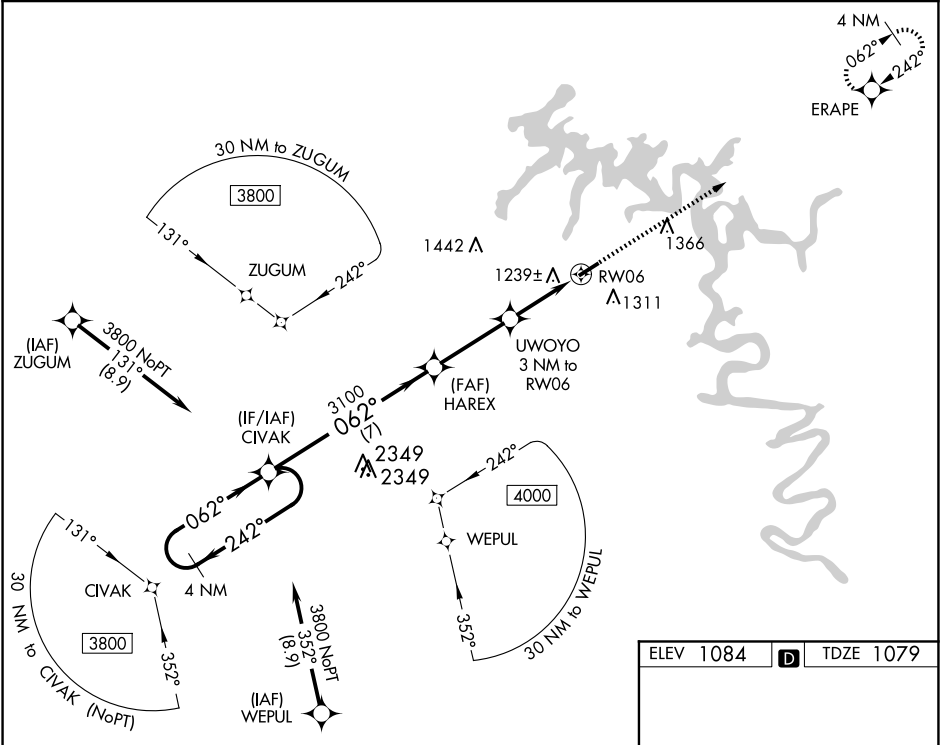
WAAS CH <b>82433</b> <b>W06A</b>	APP CRS <b>062°</b>	Rwy Ldg <b>4106</b> TDZE <b>1079</b> Apt Elev <b>1084</b>
--	------------------------	---

RNAV (GPS) RWY 6

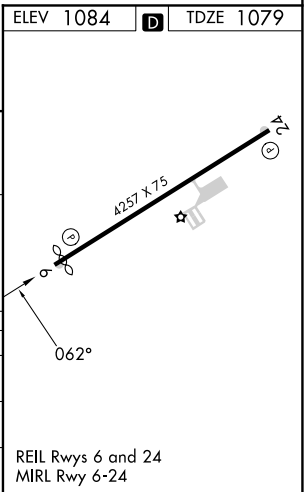
SMITHVILLE MUNI (ØA3)

RNP APCH.	Baro-VNAV NA. Procedure NA at night. Rwy 6 helicopter visibility reduction below 1 SM NA. Use Sparta altimeter setting; when not received, use Tullahoma altimeter setting and increase LPV DA to 1486 feet and all visibilities ½ SM, increase LNAV/VNAV DA to 1645 feet and all visibilities ¼ SM, increase all MDA 60 feet and LNAV visibility Cat C ¼ SM.	MISSED APPROACH: Climb to 3800 direct ERAPE and hold.
-----------	---	---

SRB AWOS-3 <b>128.25</b>	MEMPHIS CENTER <b>132.9 290.3</b>	UNICOM <b>122.8 (CTAF)</b>
-----------------------------	--------------------------------------	-------------------------------



CATEGORY	A	B	C	D
LPV DA	1433-1	354 (400-1)		NA
LNAV/VNAV DA	1592-1	513 (600-1)		NA
LNAV MDA	1580-1	501 (500-1)	1580-1 501 (500-1)	NA



SE-1, 10 JUL 2025 to 07 AUG 2025

SE-1, 10 JUL 2025 to 07 AUG 2025