

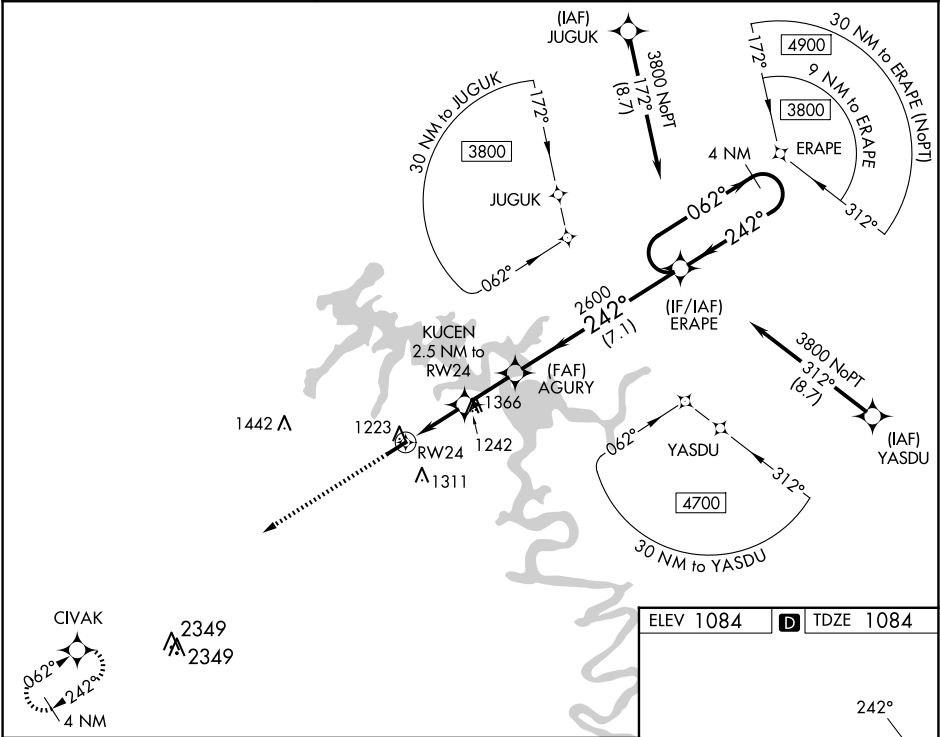
WAAS CH <b>93527</b> <b>W24A</b>	APP CRS <b>242°</b>	Rwy Ldg TDZE Apt Elev	<b>4106</b> <b>1084</b> <b>1084</b>
--	------------------------	-----------------------------	---

RNAV (GPS) RWY 24

SMITHVILLE MUNI (ØA.3)

RNP APCH.	Baro-VNAV NA. Procedure NA at night. Rwy 24 helicopter visibility reduction below 1 SM NA. Use Sparta altimeter setting, when not received, use Tullahoma altimeter setting and increase LPV DA to 1455 feet; increase LNAV/VNAV DA to 1471 feet and all visibilities ½ SM, increase all MDA 60 feet and LNAV visibility Cat C ½ SM.	MISSED APPROACH: Climb to 3800 direct CIVAK and hold.
-----------	--	---

SRB AWOS-3 <b>128.25</b>	MEMPHIS CENTER <b>132.9 290.3</b>	UNICOM <b>122.8 (CTAF)</b>
-----------------------------	--------------------------------------	-------------------------------



3800	CIVAK	VGSI and RNAV glidepath not coincident (VGSI Angle 3.50/TCH 27).	ERAPE	4 NM Holding Pattern
KUCEN 2.5 NM to RW24	AGURY 2600	242°	062°	3800
RW24	1920	2600	242°	GP 3.00° TCH 59
2.5 NM	2.1 NM	7.1 NM		
CATEGORY	A	B	C	D
LPV DA	1402-1	318 (400-1)		NA
LNAV/VNAV DA	1418-1	334 (400-1)		NA
LNAV MDA	1520-1	436 (500-1)	1520-1¼ 436 (500-1¼)	NA

