

MIDDLEFIELD, OHIO

AL-6254 (FAA)

23278

WAAS CH <b>61233</b> <b>W29A</b>	APP CRS <b>289°</b>	Rwy Idg <b>3500</b> TDZE <b>1167</b> Apt Elev <b>1174</b>
--	------------------------	---

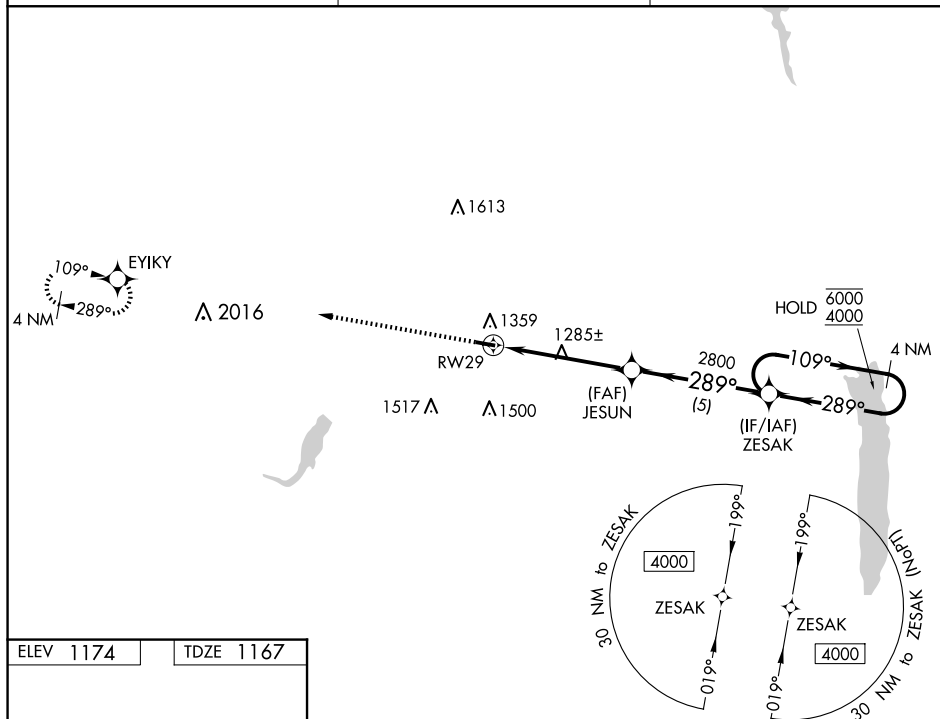
RNAV (GPS) RWY 29  
GEAUGA COUNTY (7G8)

RNP APCH - GPS.
-----------------

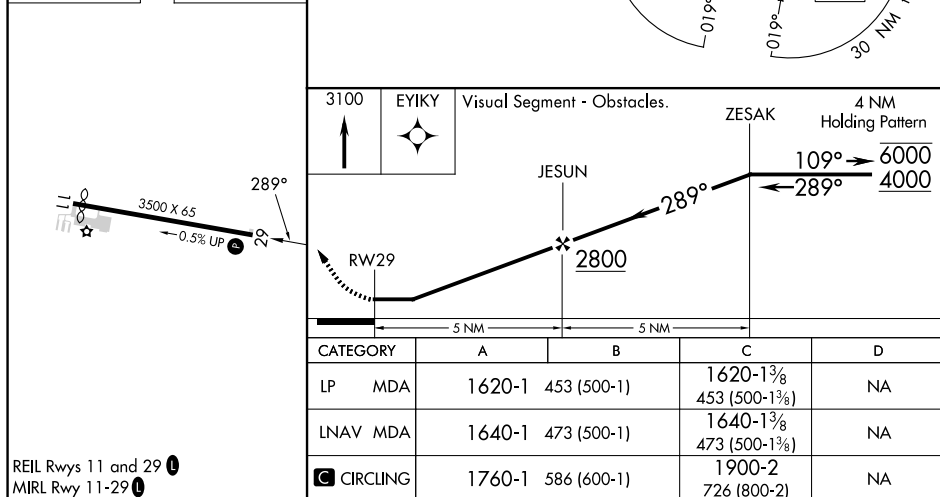
**T** Circling Rwy 11 NA at night. Rwy 29 helicopter visibility reduction below  $\frac{3}{4}$  SM NA.  
**A** NA Use Youngstown/Warren altimeter setting; when not received, use Cuyahoga County altimeter setting and increase all MDAs 40 feet and increase Circling Cat C visibility  $\frac{1}{4}$  SM.

**MISSED APPROACH:**  
Climb to 3100 direct  
EYIKY and hold.

YNG ASOS	CLEVELAND APP CON	UNICOM
123.75	125.35 346.325	123.0 (CTAF) 0



ELEV 1174		TDZE 1167
-----------	--	-----------



CATEGORY	A	B	C	D
LP MDA	1620-1	453 (500-1)	1620-1 $\frac{3}{8}$ 453 (500-1 $\frac{3}{8}$ )	NA
LNAV MDA	1640-1	473 (500-1)	1640-1 $\frac{3}{8}$ 473 (500-1 $\frac{3}{8}$ )	NA
<b>C</b> CIRCLING	1760-1	586 (600-1)	1900-2 726 (800-2)	NA

REIL Rwy 11 and 29 **L**  
MIRL Rwy 11-29 **L**

MIDDLEFIELD, OHIO

Orig-C 04NOV21

41°27'N-81°04'W

GFAUGA COUNTY (7G8)

## RNAV (GPS) RWY 29