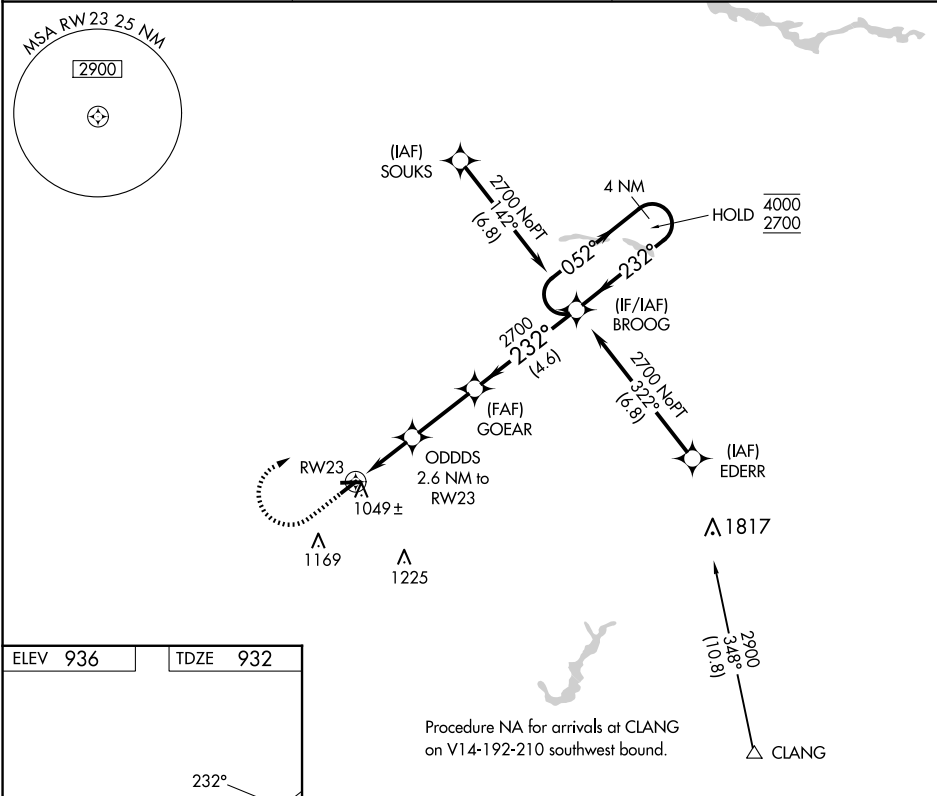


APP CRS	Rwy Idg	3760
232°	TDZE	932
	Apt Elev	936


RNAV (GPS) RWY 23

SHERIDAN (5I4)

RNP APCH - GPS.		MISSED APPROACH: Climb to 1800 then climbing right turn to 2700 direct BROOG and hold.
⚠ NA Circling NA to Rwy 9 and 27. Procedure NA at night. Rwy 23 helicopter visibility reduction below 1 SM NA. Use Indianapolis Exec altimeter setting.		
TYQ AWOS-3PT 120.725	INDIANAPOLIS APP CON 124.65 317.8	UNICOM 123.075 (CTAF) 0



LIRL Rwy 5-23

CATEGORY	A	B	C	D
LNAV MDA	1340-1	408 (500-1)	1340-1 $\frac{1}{8}$ 408 (500-1 $\frac{1}{8}$ )	NA
 CIRCLING	1400-1 464 (500-1)	1420-1 484 (500-1)	1500-1 $\frac{1}{2}$ 564 (600-1 $\frac{1}{2}$ )	NA

EC-2, 10 JUL 2025 to 07 AUG 2025

EC-2, 10 JUL 2025 to 07 AUG 2025